

35-1323: Polyclonal Antibody to Cyclin B1 (phospho-Ser147)

Clonality :	Polyclonal
Application :	WB,IHC,IF
Reactivity :	Human
Gene :	CCNB1
Gene ID :	891
Uniprot ID :	P14635
Format :	Purified
Isotype :	Rabbit IgG
Immunogen Information :	Peptide sequence around phosphorylation site of Serine 147 (A-F-S(p)-D-V) derived from Human Cyclin B1.

Description

The protein encoded by Cyclin B1 is a regulatory protein involved in mitosis. The gene product complexes with p34(cdc2) to form the maturation-promoting factor (MPF). Two alternative transcripts have been found, a constitutively expressed transcript and a cell cycle-regulated transcript, that is expressed predominantly during G2/M phase. The different transcripts result from the use of alternate transcription initiation sites.

Product Info

Amount :	50 μ l / 100 μ l
Content :	Supplied at 1.0mg/mL in phosphate buffered saline (without Mg ²⁺ and Ca ²⁺), pH 7.4, 150mM NaCl, 0.02% sodium azide and 50% glycerol.
Storage condition :	Store the antibody at 4°C, stable for 6 months. For long-term storage, store at -20°C. Avoid repeated freeze and thaw cycles.

Application Note

Predicted MW: 60kd, Western blotting: 1:500~1:1000, Immunohistochemistry: 1:50~1:100, Immunofluorescence: 1:100~1:200

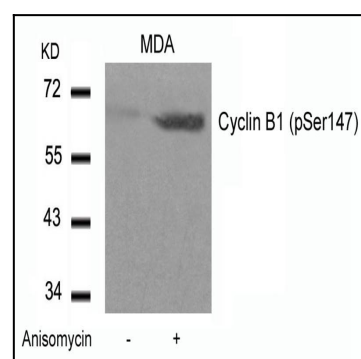


Figure 1: Western blot analysis of extracts from MDA cells untreated or treated with Anisomycin using Cyclin B1(phospho-Ser147) Antibody 35-1323 .

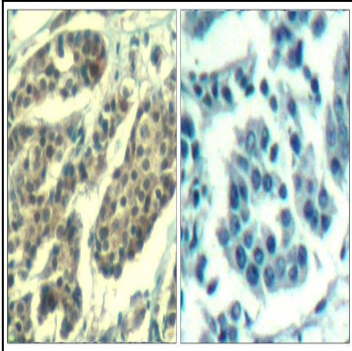


Figure 2: Immunohistochemical analysis of paraffin-embedded human breast carcinoma tissue using Cyclin B1(Phospho-Ser147) Antibody 35-1323 (left) or the same antibody preincubated with blocking peptide(right).

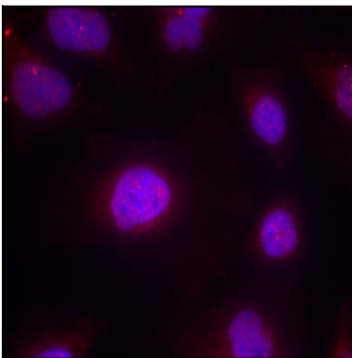


Figure 3: Immunofluorescence staining of methanol-fixed HeLa cells using Cyclin B1(phospho-Ser147) Antibody 35-1323 .