

35-1322: Polyclonal Antibody to c-kit (phospho-Tyr936)

Clonality :	Polyclonal
Application :	IHC,WB
Reactivity :	Human
Gene :	KIT
Gene ID :	3815
Uniprot ID :	P10721
Format :	Purified
Alternative Name :	KIT, CD117, SCFR, PBT
Isotype :	Rabbit IgG
Immunogen Information :	Peptide sequence around phosphorylation site of tyrosine 936 (H-I-Y(p)-S-N) derived from Human c-Kit.

Description

This is the receptor for stem cell factor (mast cell growth factor). It has a tyrosine-protein kinase activity. Binding of the ligands leads to the autophosphorylation of KIT and its association with substrates such as phosphatidylinositol 3-kinase (Pi3K)

Product Info

Amount :	50 μ l / 100 μ l
Content :	Supplied at 1.0mg/mL in phosphate buffered saline (without Mg ²⁺ and Ca ²⁺), pH 7.4, 150mM NaCl, 0.02% sodium azide and 50% glycerol.
Storage condition :	Store the antibody at 4°C, stable for 6 months. For long-term storage, store at -20°C. Avoid repeated freeze and thaw cycles.

Application Note

Predicted MW: 120 145kd, Western blotting: 1:500~1:1000, Immunohistochemistry: 1:50~1:100

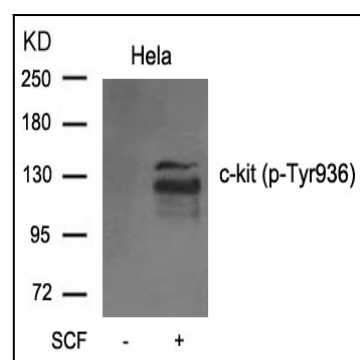


Figure 1: Western blot analysis of extracts from C6 cell untreated or treated with serum using c-kit(phospho-Tyr936) Antibody 35-1322 .

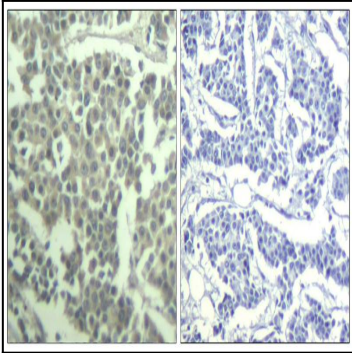


Figure 2: Immunohistochemical analysis of paraffin-embedded human breast carcinoma tissue using c-kit(Phospho-Tyr936) Antibody 35-1322 (left) or the same antibody preincubated with blocking peptide(right).