

## 35-1321: Polyclonal Antibody to Paxillin (phospho-Tyr88)

<b>Clonality :</b>	Polyclonal
<b>Application :</b>	WB,IF
<b>Reactivity :</b>	Human
<b>Gene :</b>	PXN
<b>Gene ID :</b>	5829
<b>Uniprot ID :</b>	P49023
<b>Format :</b>	Purified
<b>Alternative Name :</b>	Paxillin; Pxn
<b>Isotype :</b>	Rabbit IgG
<b>Immunogen Information :</b>	Peptide sequence around phosphorylation site of tyrosine 88 (P-V-Y(p)-G-S) derived from Human Paxillin.

### Description

An antiphosphotyrosine antibody was used to identify proteins that are phosphorylated in Rous sarcoma virus-transformed chick embryo fibroblasts, and a 76-kD protein was obtained that localizes to focal adhesions at the ends of actin-containing stress fibers in nontransformed cells (Ref.1). This protein was purified from chicken gizzard smooth muscle, and was named Pxn (Paxillin) ('paxillus' means 'small stake' or 'peg' in Latin) as a protein tethered to the membrane at focal adhesions

### Product Info

<b>Amount :</b>	50 µl / 100 µl
<b>Content :</b>	Supplied at 1.0mg/mL in phosphate buffered saline (without Mg <sup>2+</sup> and Ca <sup>2+</sup> ), pH 7.4, 150mM NaCl, 0.02% sodium azide and 50% glycerol.
<b>Storage condition :</b>	Store the antibody at 4°C, stable for 6 months. For long-term storage, store at -20°C. Avoid repeated freeze and thaw cycles.

### Application Note

Western blotting: 1:500~1:1000, Immunofluorescence: 1:100~1:200

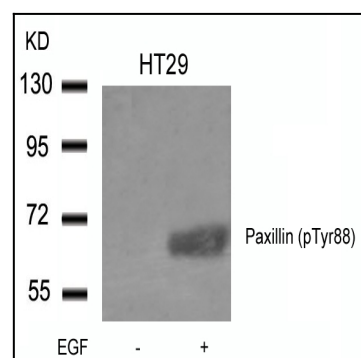


Figure 1: Western blot analysis of extracts from HT29 cells untreated or treated with EGF using Paxillin(phospho-Tyr88) Antibody 35-1321 .

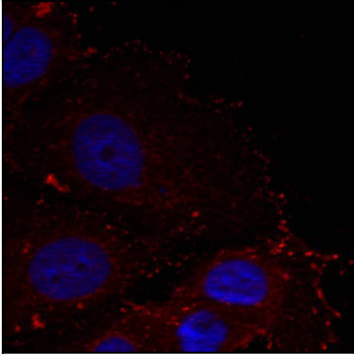


Figure 2: Immunofluorescence staining of methanol-fixed HeLa cells using Paxillin(phospho-Tyr88) Antibody 35-1321 .