

## 35-1318: Polyclonal Antibody to MARCKS (phospho-Ser170)

<b>Clonality :</b>	Polyclonal
<b>Application :</b>	WB,IHC
<b>Reactivity :</b>	Human
<b>Gene :</b>	MARCKS
<b>Gene ID :</b>	4082
<b>Uniprot ID :</b>	P29966
<b>Format :</b>	Purified
<b>Alternative Name :</b>	MACS,80K-L,PKCSL,PRKCSL
<b>Isotype :</b>	Rabbit IgG
<b>Immunogen Information :</b>	Peptide sequence around phosphorylation site of Serine 170 (G-F-S(p)-F-K) derived from Human MARCKS.

### Description

MARCKS is the most prominent cellular substrate for protein kinase C. This protein binds calmodulin, actin, and synapsin. MARCKS is a filamentous (F) actin cross-linking protein. Ramsden, J.J. (2000) Int. J. Biochem. Cell Biol. 32, 475-479. Graff, J. M. et al. (1989) J. Biol. Chem. 264, 21818-21823. Hartwig, J. H. et al. (1992) Nature 356, 618-622. Thelen, M. et al. (1991) Nature 351, 320-322.

### Product Info

<b>Amount :</b>	50 µl / 100 µl
<b>Content :</b>	Supplied at 1.0mg/mL in phosphate buffered saline (without Mg <sup>2+</sup> and Ca <sup>2+</sup> ), pH 7.4, 150mM NaCl, 0.02% sodium azide and 50% glycerol.
<b>Storage condition :</b>	Store the antibody at 4°C, stable for 6 months. For long-term storage, store at -20°C. Avoid repeated freeze and thaw cycles.

### Application Note

Predicted MW: 80kd, Western blotting: 1:500~1:1000, Immunohistochemistry: 1:50~1:100

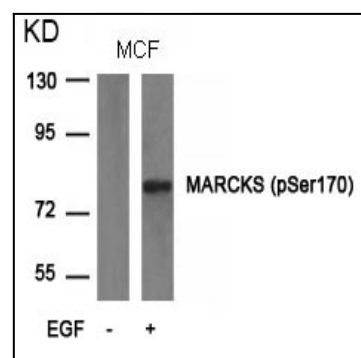


Figure 1: Western blot analysis of extracts from MCF cells untreated or treated with EGF using MARCKS(phospho-Ser170) Antibody 35-1318 .

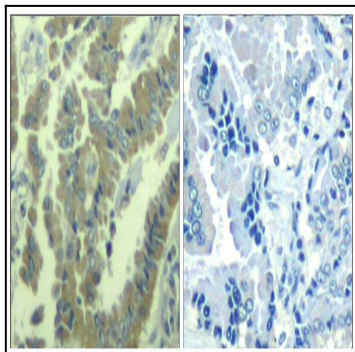


Figure 2: Immunohistochemical analysis of paraffin-embedded human lung carcinoma tissue using MARCKS(Phospho-Ser170) Antibody 35-1318 (left) or the same antibody preincubated with blocking peptide(right).

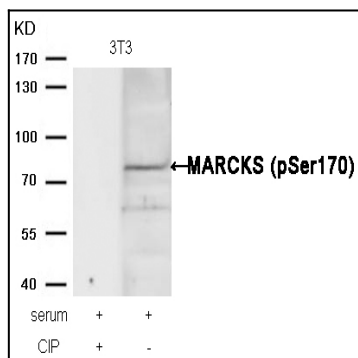


Figure 3: Western blot analysis of extracts from 3T3 cells, treated with serum or calf intestinal phosphatase (CIP), using MARCKS (phospho-Ser170) Antibody 35-1318 .