

## 35-1316: Polyclonal Antibody to ABL1/2 (phospho-Tyr393/439)

<b>Clonality :</b>	Polyclonal
<b>Application :</b>	IHC,WB,IF
<b>Reactivity :</b>	Mouse,Human
<b>Gene :</b>	ABL1
<b>Gene ID :</b>	25
<b>Uniprot ID :</b>	P00519 /P42684
<b>Format :</b>	Purified
<b>Alternative Name :</b>	Abelson murine leukemia viral oncogene homolog 1, c-ABL, p150
<b>Isotype :</b>	Rabbit IgG
<b>Immunogen Information :</b>	Peptide sequence around phosphorylation site of tyrosine 393/439 (D-T-Y(p)-T-A) derived from Human ABL1/2.

### Description

Regulates cytoskeleton remodeling during cell differentiation, cell division and cell adhesion. Localizes to dynamic actin structures, and phosphorylates CRK and CRKL, DOK1, and other proteins controlling cytoskeleton dynamics. Regulates DNA repair potentially by activating the proapoptotic pathway when the DNA damage is too severe to be repaired. Phosphorylates PSMA7 that leads to an inhibition of proteasomal activity and cell cycle transition blocks. Wang, J.Y. et al. (2000) Oncogene 19, 5643-5650. Danial, N.N. et al. (2000) Oncogene 19, 2523-2531. Brasher, B.B. et al. (2000) J. Biol. Chem. 275, 35631-35637. Pluk, H. et al. (2002) Cell 108, 247-259.

### Product Info

<b>Amount :</b>	50 µl / 100 µl
<b>Content :</b>	Supplied at 1.0mg/mL in phosphate buffered saline (without Mg <sup>2+</sup> and Ca <sup>2+</sup> ), pH 7.4, 150mM NaCl, 0.02% sodium azide and 50% glycerol.
<b>Storage condition :</b>	Store the antibody at 4°C, stable for 6 months. For long-term storage, store at -20°C. Avoid repeated freeze and thaw cycles.

### Application Note

Predicted MW: 210kd, Western blotting: 1:500~1:1000, Immunohistochemistry: 1:50~1:100, Immunofluorescence: 1:100~1:200

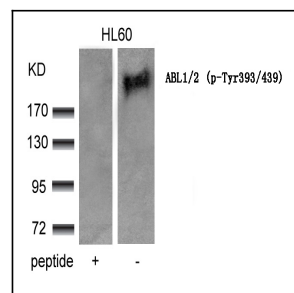


Figure 1: Western blot analysis of extracts from HL60 cells using ABL1/2(phospho-Tyr393/439) Antibody 35-1316 and the same antibody preincubated with blocking peptide.

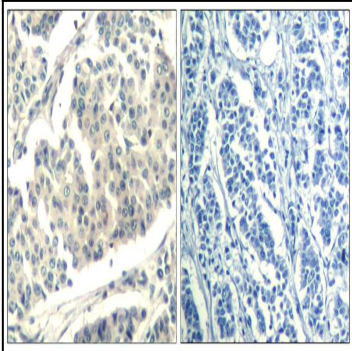


Figure 2: Immunohistochemical analysis of paraffin-embedded human breast carcinoma tissue using ABL1/2(Phospho-Tyr393/439) Antibody 35-1316 (left) or the same antibody preincubated with blocking peptide(right).

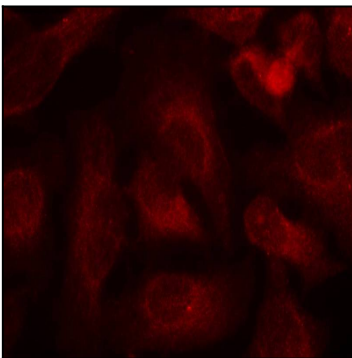


Figure 3: Immunofluorescence staining of methanol-fixed HeLa cells using ABL1/2(phospho-Tyr393/439) Antibody 35-1316 .