

35-1307: Polyclonal Antibody to Her3/ErbB3 (phospho-Tyr1328)

Clonality :	Polyclonal
Application :	IHC,WB,IF
Reactivity :	Rat,Mouse,Human
Gene :	ERBB3
Gene ID :	2065
Uniprot ID :	P21860
Format :	Purified
Alternative Name :	Tyrosine kinase-type cell surface receptor HER3
Isotype :	Rabbit IgG
Immunogen Information :	Peptide sequence around phosphorylation site of tyrosine 1328 (P-D-Y(p)-W-H) derived from Human Her3/ErbB3.

Description

Binds and is activated by neuregulins and NTAK.

Product Info

Amount :	50 μ l / 100 μ l
Content :	Supplied at 1.0mg/mL in phosphate buffered saline (without Mg ²⁺ and Ca ²⁺), pH 7.4, 150mM NaCl, 0.02% sodium azide and 50% glycerol.
Storage condition :	Store the antibody at 4°C, stable for 6 months. For long-term storage, store at -20°C. Avoid repeated freeze and thaw cycles.

Application Note

Predicted MW: 185kd, Western blotting: 1:500~1:1000, Immunohistochemistry: 1:50~1:100, Immunofluorescence: 1:100~1:200

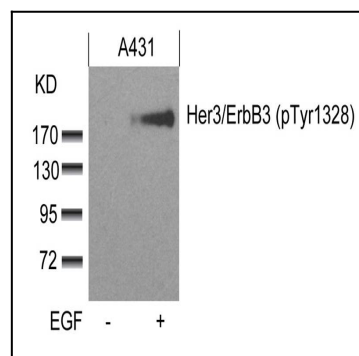


Figure 1: Western blot analysis of extracts from A431 cells untreated or treated with EGF using Her3/ErbB3(phospho-Tyr1328) Antibody 35-1307 .

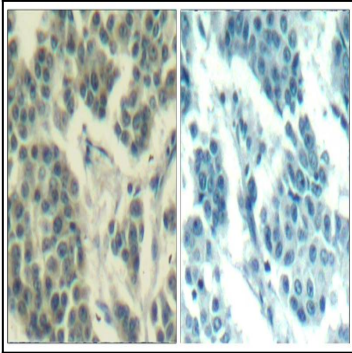


Figure 2: Immunohistochemical analysis of paraffin-embedded human breast carcinoma tissue using Her3/ErbB3(Phospho-Tyr1328) Antibody 35-1307 (left) or the same antibody preincubated with blocking peptide(right).

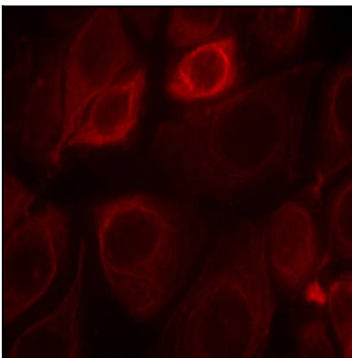


Figure 3: Immunofluorescence staining of methanol-fixed MCF7 cells using Her3/ErbB3(phospho-Tyr1328) Antibody 35-1307 .