

## 35-1306: Polyclonal Antibody to PI3 Kinase p85/p55(phospho-Tyr467/199)Antibody

<b>Clonality :</b>	Polyclonal
<b>Application :</b>	WB
<b>Reactivity :</b>	Rat,Mouse,Human
<b>Gene :</b>	PIK3R1
<b>Gene ID :</b>	5295
<b>Uniprot ID :</b>	P27986 /Q92569
<b>Format :</b>	Purified
<b>Alternative Name :</b>	p85,AGM7,p85-ALPHA,p55,p55-GAMMA
<b>Isotype :</b>	Rabbit IgG
<b>Immunogen Information :</b>	Peptide sequence around phosphorylation site of tyrosine 467 (L-Y(p)-E-E-Y) derived from Human PI3 Kinase p85/p55.

### Description

Binds to activated (phosphorylated) protein-Tyr kinases, through its SH2 domain, and acts as an adapter, mediating the association of the p110 catalytic unit to the plasma membrane. Necessary for the insulin-stimulated increase in glucose uptake and glycogen synthesis in insulin-sensitive tissues. Binds to activated (phosphorylated) protein-tyrosine kinases through its SH2 domain and regulates their kinase activity. During insulin stimulation, it also binds to IRS-1./Binds to activated (phosphorylated) protein-tyrosine kinases, through its SH2 domain, and acts as an adapter, mediating the association of the p110 catalytic unit to the plasma membrane.

### Product Info

<b>Amount :</b>	50 µl / 100 µl
<b>Content :</b>	Supplied at 1.0mg/mL in phosphate buffered saline (without Mg <sup>2+</sup> and Ca <sup>2+</sup> ), pH 7.4, 150mM NaCl, 0.02% sodium azide and 50% glycerol.
<b>Storage condition :</b>	Store the antibody at 4°C, stable for 6 months. For long-term storage, store at -20°C. Avoid repeated freeze and thaw cycles.

### Application Note

Predicted MW: 55, 85kd, Western blotting: 1:500~1:1000

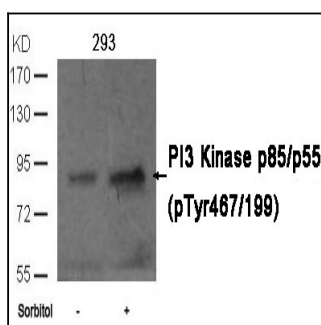


Figure 1: Western blot analysis of extracts from 293 cells untreated or treated with sorbitol using PI3 Kinase p85/p55 (phospho-Tyr467/199)Antibody 35-1306 .