

## 35-1297: Polyclonal Antibody to Alpha-catenin (Phospho-Ser641)

<b>Clonality :</b>	Polyclonal
<b>Application :</b>	WB
<b>Reactivity :</b>	Mouse,Human
<b>Gene :</b>	CTNNA1
<b>Gene ID :</b>	1495
<b>Uniprot ID :</b>	P35221
<b>Format :</b>	Purified
<b>Alternative Name :</b>	Cadherin-associated protein, Alpha E-catenin, NY-REN-13 antigen
<b>Isotype :</b>	Rabbit IgG
<b>Immunogen Information :</b>	Peptide sequence around phosphorylation site of serine 641 (D-D-S(p)-D-F) derived from Human $\alpha$ -catenin.

### Description

Associates with the cytoplasmic domain of a variety of cadherins. The association of catenins to cadherins produces a complex which is linked to the actin filament network, and which seems to be of primary importance for cadherins cell-adhesion properties. May play a crucial role in cell differentiation. Hwang, S.G. et al. (2005) J. Biol. Chem. 280, 12758-12765  
Drees, F. et al. (2005) Cell 123, 903-915. Yamada, S. et al. (2005) Cell 123, 889-901. Kobiela, A. and Fuchs, E. (2004) Nat. Rev. Mol. Cell Biol. 5, 614-625.

### Product Info

<b>Amount :</b>	50 $\mu$ l / 100 $\mu$ l
<b>Content :</b>	Supplied at 1.0mg/mL in phosphate buffered saline (without Mg <sup>2+</sup> and Ca <sup>2+</sup> ), pH 7.4, 150mM NaCl, 0.02% sodium azide and 50% glycerol.
<b>Storage condition :</b>	Store the antibody at 4°C, stable for 6 months. For long-term storage, store at -20°C. Avoid repeated freeze and thaw cycles.

### Application Note

Predicted MW: 100kd, Western blotting: 1:500~1:1000

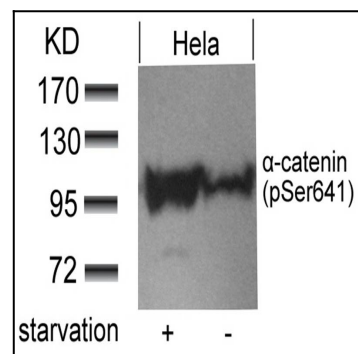


Figure 1: Western blot analysis of extracts from HeLa cells untreated or treated with starvation using  $\alpha$ -catenin(Phospho-Ser641) Antibody 35-1297 .

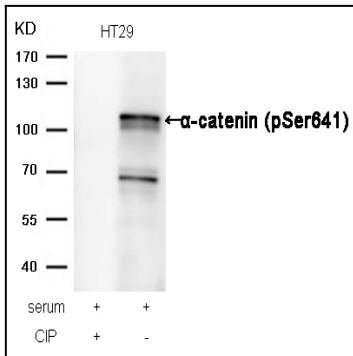


Figure 2: Western blot analysis of extracts from HT29 cells, treated with serum or calf intestinal phosphatase (CIP), using  $\alpha$ -catenin (Phospho-Ser641) Antibody 35-1297 .