

35-1288: Polyclonal Antibody to SHP-2 (Phospho-Tyr580)

Clonality :	Polyclonal
Application :	IHC,WB
Reactivity :	Rat,Mouse,Human
Gene :	PTPN11
Gene ID :	5781
Uniprot ID :	Q06124
Format :	Purified
Alternative Name :	PTN11, PTP-1D, PTP-2C, PTP2C, PTPN11
Isotype :	Rabbit IgG
Immunogen Information :	Peptide sequence around phosphorylation site of tyrosine 580 (R-V-Y(p)-E-N) derived from Human SHP-2.

Description

Acts downstream of various receptor and cytoplasmic protein tyrosine kinases to participate in the signal transduction from the cell surface to the nucleus. Ferjoux G, et al. (2003) Mol Biol Cell. 2003 ; 14(9): 3911-3928. Shi ZQ, et al. (2000) Mol Cell Biol ; 20(5): 1526-1536. Li C, Friedman JM. (1999) Proc Natl Acad Sci U S A ; 96(17): 9677-9682 Manes S, et al. (1999) Mol Cell Biol ; 19(4): 3125-3135. Oh ES, et al. (1999) Mol Cell Biol; 19(4): 3205-3215.

Product Info

Amount :	50 µl / 100 µl
Content :	Supplied at 1.0mg/mL in phosphate buffered saline (without Mg ²⁺ and Ca ²⁺), pH 7.4, 150mM NaCl, 0.02% sodium azide and 50% glycerol.
Storage condition :	Store the antibody at 4°C, stable for 6 months. For long-term storage, store at -20°C. Avoid repeated freeze and thaw cycles.

Application Note

Predicted MW: 72kd, Immunohistochemistry: 1:50~1:100

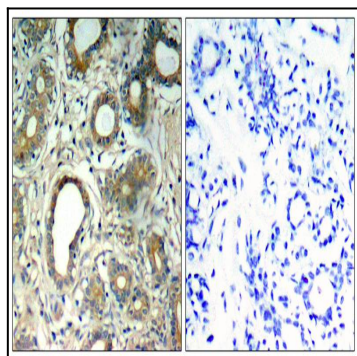


Figure 1: Immunohistochemical analysis of paraffin-embedded human breast carcinoma tissue using SHP-2(Phospho-Tyr580) Antibody 35-1288 (left) or the same antibody preincubated with blocking peptide(right).

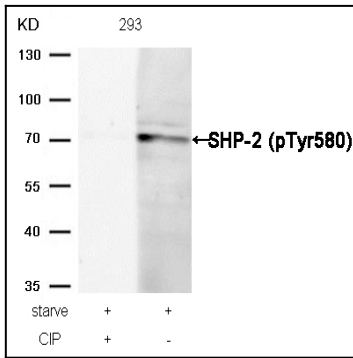


Figure 2: Western blot analysis of extracts from 293 cells, treated with starve or calf intestinal phosphatase (CIP), using SHP-2 (Phospho-Tyr580) Antibody 35-1288 .