

## 35-1287: Polyclonal Antibody to SHP-2 (Phospho-Tyr542)

<b>Clonality :</b>	Polyclonal
<b>Application :</b>	IHC,WB
<b>Reactivity :</b>	Rat,Mouse,Human
<b>Gene :</b>	PTPN11
<b>Gene ID :</b>	5781
<b>Uniprot ID :</b>	Q06124
<b>Format :</b>	Purified
<b>Alternative Name :</b>	PTN11, PTP-1D, PTP-2C, PTP2C, PTPN11
<b>Isotype :</b>	Rabbit IgG
<b>Immunogen Information :</b>	Peptide sequence around phosphorylation site of tyrosine 542 (H-E-Y(p)-T-N) derived from Human SHP-2.

### Description

Acts downstream of various receptor and cytoplasmic protein tyrosine kinases to participate in the signal transduction from the cell surface to the nucleus. Ferjoux G, et al. (2003) Mol Biol Cell. 2003; 14(9): 3911-3928. Shi ZQ, et al. (2000) Mol Cell Biol. 20(5): 1526-1536. Li C, Friedman JM. (1999) Proc Natl Acad Sci U S A ; 96(17): 9677-9682 Manes S, et al. (1999) Mol Cell Biol. 19(4): 3125-3135. Oh ES, et al. (1999) Mol Cell Biol; 19(4): 3205-3215.

### Product Info

<b>Amount :</b>	50 µl / 100 µl
<b>Content :</b>	Supplied at 1.0mg/mL in phosphate buffered saline (without Mg <sup>2+</sup> and Ca <sup>2+</sup> ), pH 7.4, 150mM NaCl, 0.02% sodium azide and 50% glycerol.
<b>Storage condition :</b>	Store the antibody at 4°C, stable for 6 months. For long-term storage, store at -20°C. Avoid repeated freeze and thaw cycles.

### Application Note

Predicted MW: 72kd, Western blotting: 1:500~1:1000, Immunohistochemistry: 1:50~1:100

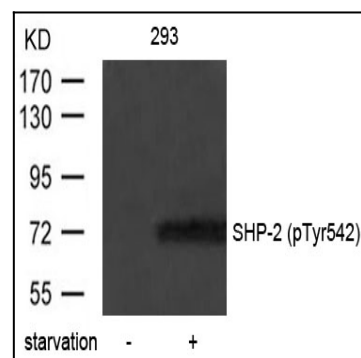


Figure 1: Western blot analysis of extracts from 293 cells untreated or treated with starvation using SHP-2(Phospho-Tyr542) Antibody 35-1287 .

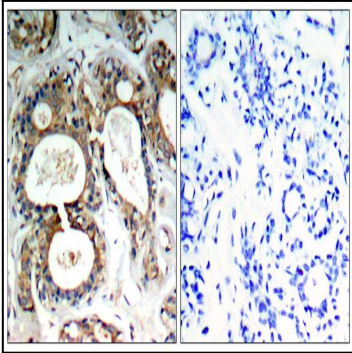


Figure 2: Immunohistochemical analysis of paraffin-embedded human breast carcinoma tissue using SHP-2(Phospho-Tyr542) Antibody 35-1287 (left) or the same antibody preincubated with blocking peptide(right).