

35-1274: Polyclonal Antibody to IκB-beta (Phospho-Ser23)

Clonality :	Polyclonal
Application :	IHC,WB
Reactivity :	Rat,Mouse,Human
Gene :	NFKIB1B
Gene ID :	4793
Uniprot ID :	Q15653
Format :	Purified
Alternative Name :	I-kappa-B-beta, IKB-B, IKBB, NF-kappa-BIB, NF-kappaB inhibitor beta
Isotype :	Rabbit IgG
Immunogen Information :	Peptide sequence around phosphorylation site of serine 23 (L-G-S(p)-L-G) derived from Human IκB-b.

Description

Inhibits NF-kappa-B by complexing with and trapping it in the cytoplasm. However, the unphosphorylated form resynthesized after cell stimulation is able to bind NF-kappa-B allowing its transport to the nucleus and protecting it to further IKBA-dependent inactivation. Association with inhibitor kappa B-interacting NKIRAS1 and NKIRAS2 prevent its phosphorylation rendering it more resistant to degradation, explaining its slower degradation. Shirane, M. et al. (1999) J Biol Chem 274, 28169-28174. DiDonato J, et al. (1996) Mol Cell Biol 16(4): 1295-304

Product Info

Amount :	50 µl / 100 µl
Content :	Supplied at 1.0mg/mL in phosphate buffered saline (without Mg ²⁺ and Ca ²⁺), pH 7.4, 150mM NaCl, 0.02% sodium azide and 50% glycerol.
Storage condition :	Store the antibody at 4°C, stable for 6 months. For long-term storage, store at -20°C. Avoid repeated freeze and thaw cycles.

Application Note

Predicted MW: 48kd, Immunohistochemistry: 1:50~1:100

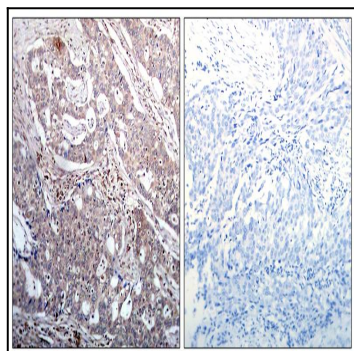


Figure 1: Immunohistochemical analysis of paraffin-embedded human breast carcinoma tissue using IκB-b(Phospho-Ser23) Antibody 35-1274 (left) or the same antibody preincubated with blocking peptide(right).

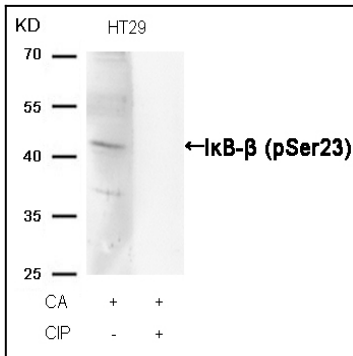


Figure 2: Western blot analysis of extracts from HT29 cells, treated with CA or calf intestinal phosphatase (CIP), using IκB-β (Phospho-Ser23) Antibody 35-1274 .