

## 35-1270: Polyclonal Antibody to PKC Theta (Phospho-Ser676)

|                                |   |
|--------------------------------|---|
| <b>Clonality :</b>             | Polyclonal  |
| <b>Application :</b>           | WB,IHC,IF   |
| <b>Reactivity :</b>            | Human,Mouse,Rat   |
| <b>Gene :</b>                  | PRKCQ   |
| <b>Gene ID :</b>               | 5588  |
| <b>Uniprot ID :</b>            | Q04759  |
| <b>Format :</b>                | Purified  |
| <b>Alternative Name :</b>      | KPCT, PKC-theta, PKCQ, PRKCQ, PRKCT   |
| <b>Isotype :</b>               | Rabbit IgG  |
| <b>Immunogen Information :</b> | Peptide sequence around phosphorylation site of serine 676 (R-L-S(p)-F-A) derived from Human PKCth. |

### Description

This is a calcium-independent, phospholipid-dependent, serine- and threonine-specific enzyme. Essential for T-cell receptor (TCR)-mediated T-cell activation, but is dispensable during TCR-dependent thymocyte development. Links the TCR signaling complex to the activation of NF-kappa-B in mature T lymphocytes. Required for interleukin-2 (IL2) production. Kristof Van Kolen, et al. (2006) FEBS J ; 273: 1843 - 1854. Martin Villalba, et al. (2002) J. Cell Biol ; 157: 253. Jie Zhang, et al. (2004) J. Biol. Chem ; 279: 22118 - 22123. Castro AF, et al. (1998) Am J Physiol Cell Physiol; 275: C113 - C119.

### Product Info

|                            |  |
|----------------------------|--|
| <b>Amount :</b>            | 50 µl / 100 µl   |
| <b>Content :</b>           | Supplied at 1.0mg/mL in phosphate buffered saline (without Mg <sup>2+</sup> and Ca <sup>2+</sup> ), pH 7.4, 150mM NaCl, 0.02% sodium azide and 50% glycerol. |
| <b>Storage condition :</b> | Store the antibody at 4°C, stable for 6 months. For long-term storage, store at -20°C. Avoid repeated freeze and thaw cycles.                                |

### Application Note

Predicted MW: 80kd, Western blotting: 1:500~1:1000, Immunohistochemistry: 1:50~1:100, Immunofluorescence: 1:100~1:200

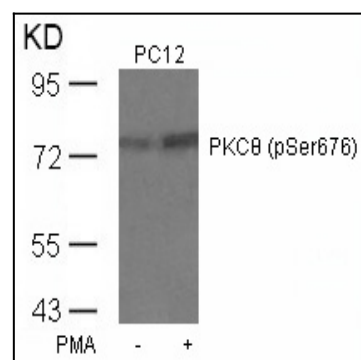


Figure 1: Western blot analysis of extracts from PC12 cells untreated or treated with PMA using PKCth(Phospho-Ser676) Antibody 35-1270 .

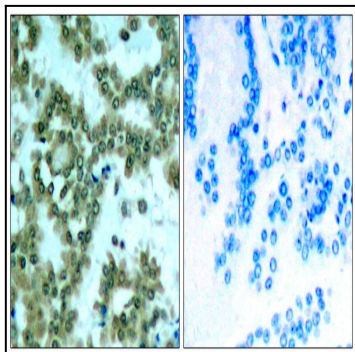


Figure 2: Immunohistochemical analysis of paraffin-embedded human lung carcinoma tissue using PKCθ(Phospho-Ser676) Antibody 35-1270 (left) or the same antibody preincubated with blocking peptide(right).

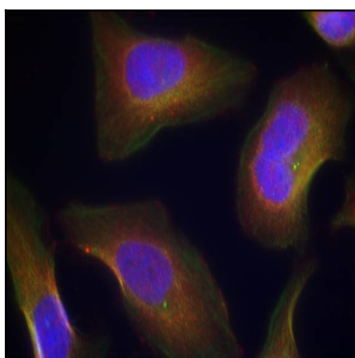


Figure 3: Immunofluorescence staining of methanol-fixed HeLa cells using PKCθ(Phospho-Ser676) Antibody 35-1270 .

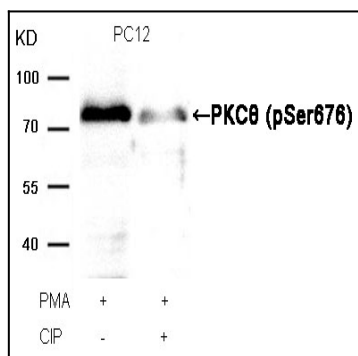


Figure 4: Western blot analysis of extracts from PC12 cells, treated with PMA or calf intestinal phosphatase (CIP), using PKCθ (Phospho-Ser676) Antibody 35-1270 .