

## 35-1257: Polyclonal Antibody to GAP43 (Phospho-Ser41)

|                                |                                                                                                |
|--------------------------------|------------------------------------------------------------------------------------------------|
| <b>Clonality :</b>             | Polyclonal                                                                                     |
| <b>Application :</b>           | IF                                                                                             |
| <b>Reactivity :</b>            | Rat,Mouse,Human                                                                                |
| <b>Gene :</b>                  | GAP43                                                                                          |
| <b>Gene ID :</b>               | 2596                                                                                           |
| <b>Uniprot ID :</b>            | P17677                                                                                         |
| <b>Format :</b>                | Purified                                                                                       |
| <b>Alternative Name :</b>      | B-50, BASP2, NEUM, PP46, axonal membrane protein GAP-43                                        |
| <b>Isotype :</b>               | Rabbit IgG                                                                                     |
| <b>Immunogen Information :</b> | Peptide sequence around phosphorylation site of Ser41 (Q-A-S(p)-F-R) derived from Human GAP43. |

### Description

GAP43 encoded by this gene has been termed a 'growth' or 'plasticity' protein because it is expressed at high levels in neuronal growth cones during development and axonal regeneration. This protein is considered a crucial component of an effective regenerative response in the nervous system. Alternatively spliced transcript variants encoding distinct isoforms have been found for this gene.

### Product Info

|                            |                                                                                                                                                              |
|----------------------------|--------------------------------------------------------------------------------------------------------------------------------------------------------------|
| <b>Amount :</b>            | 50 µl / 100 µl                                                                                                                                               |
| <b>Content :</b>           | Supplied at 1.0mg/mL in phosphate buffered saline (without Mg <sup>2+</sup> and Ca <sup>2+</sup> ), pH 7.4, 150mM NaCl, 0.02% sodium azide and 50% glycerol. |
| <b>Storage condition :</b> | Store the antibody at 4°C, stable for 6 months. For long-term storage, store at -20°C. Avoid repeated freeze and thaw cycles.                                |

### Application Note

Predicted MW: 43kd, Immunofluorescence: 1:100~1:200

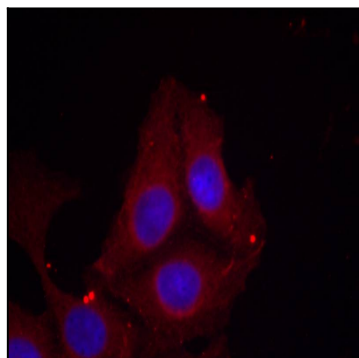


Figure 1: Immunofluorescence staining of methanol-fixed HeLa cells using GAP43(Phospho-Ser41) Antibody 35-1257 .