

## 35-1250: Polyclonal Antibody to Cortactin (Phospho-Tyr466)

|                                |   |
|--------------------------------|---|
| <b>Clonality :</b>             | Polyclonal  |
| <b>Application :</b>           | WB  |
| <b>Reactivity :</b>            | Human,Mouse   |
| <b>Gene :</b>                  | CTTN  |
| <b>Gene ID :</b>               | 2017  |
| <b>Uniprot ID :</b>            | Q14247  |
| <b>Format :</b>                | Purified  |
| <b>Alternative Name :</b>      | Amplaxin, CTTN, EMS1, SRC8  |
| <b>Isotype :</b>               | Rabbit IgG  |
| <b>Immunogen Information :</b> | Peptide sequence around phosphorylation site of tyrosine 466 (P-V-Y(p)-E-T) derived from Human CORTACTIN. |

### Description

Cortactin is overexpressed in breast cancer and squamous cell carcinomas of the head and neck. The encoded protein is localized in the cytoplasm and in areas of the cell-substratum contacts. This gene has two roles: (1) regulating the interactions between components of adherens-type junctions and (2) organizing the cytoskeleton and cell adhesion structures of epithelia and carcinoma cells. During apoptosis, the encoded protein is degraded in a caspase-dependent manner. The aberrant regulation of this gene contributes to tumor cell invasion and metastasis. Two splice variants that encode different isoforms have been identified for this gene. Luo C, et al. (2006) J Biol Chem ; 281(40):30081-30093 Head JA, et al. (2003) Mol Biol Cell ;14(8):3216-3229 Li Y, et al. (2000) J Biol Chem ; 275(47): 37187-37193 Kinley AW, et al. (2003) Curr Biol ; 13(5): 384-393

### Product Info

|                            |  |
|----------------------------|--|
| <b>Amount :</b>            | 50 µl / 100 µl   |
| <b>Content :</b>           | Supplied at 1.0mg/mL in phosphate buffered saline (without Mg <sup>2+</sup> and Ca <sup>2+</sup> ), pH 7.4, 150mM NaCl, 0.02% sodium azide and 50% glycerol. |
| <b>Storage condition :</b> | Store the antibody at 4°C, stable for 6 months. For long-term storage, store at -20°C. Avoid repeated freeze and thaw cycles.                                |

### Application Note

Predicted MW: 85kd, Western blotting: 1:500~1:1000

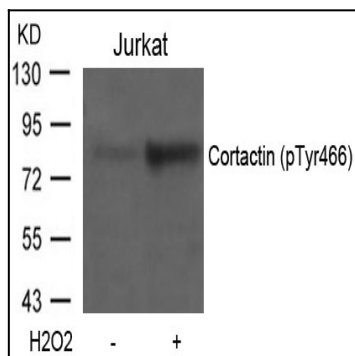


Figure 1: Western blot analysis of extracts from Jurkat cells untreated or treated with H<sub>2</sub>O<sub>2</sub> using Cortactin(Phospho-Tyr466) Antibody 35-1250 .

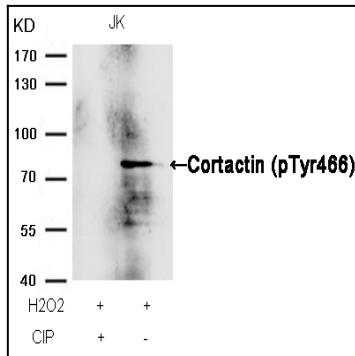


Figure 2: Western blot analysis of extracts from JK cells, treated with H2O2 or calf intestinal phosphatase (CIP), using Cortactin (Phospho-Tyr466) Antibody 35-1250 .