

35-1242: Polyclonal Antibody to HSF1 (phospho-Ser303)

Clonality :	Polyclonal
Application :	WB,IHC
Reactivity :	Human
Gene :	HSF1
Gene ID :	3297
Uniprot ID :	Q00613
Format :	Purified
Alternative Name :	HSTF 1
Isotype :	Rabbit IgG
Immunogen Information :	Peptide sequence around phosphorylation site of serine 303 (P-P-S(p)-P-P) derived from Human HSF1.

Description

DNA-binding protein that specifically binds heat shock promoter elements (HSE) and activates transcription. In higher eukaryotes, HSF is unable to bind to the HSE unless the cells are heat shocked. Parvaneh Rafiee, et.al. (2006) Am J Physiol Cell Physiol ; 291: C931 - C945 Fumika Shinozaki, et.al. (2006) J. Biol. Chem ; 281: 16361 - 16369. Eiichi Takaki, et.al. (2006) J. Biol. Chem ; 281: 4931 - 4937. Jan-Jong Hung, et.al. (1998) J. Biol. Chem ; 273: 31924.

Product Info

Amount :	50 μ l / 100 μ l
Content :	Supplied at 1.0mg/mL in phosphate buffered saline (without Mg ²⁺ and Ca ²⁺), pH 7.4, 150mM NaCl, 0.02% sodium azide and 50% glycerol.
Storage condition :	Store the antibody at 4°C, stable for 6 months. For long-term storage, store at -20°C. Avoid repeated freeze and thaw cycles.

Application Note

Predicted MW: 82kd, Western blotting: 1:500~1:1000, Immunohistochemistry: 1:50~1:100

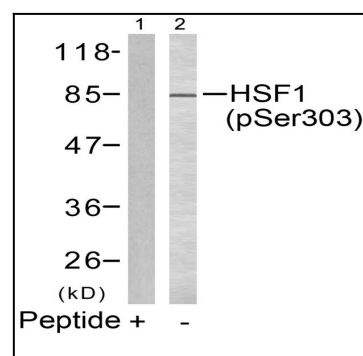


Figure 1: Western blot analysis of extracts from MCF7 cells using HSF1(phospho-Ser303) Antibody 35-1242 (Lane 2) and the same antibody preincubated with blocking peptide(Lane1).

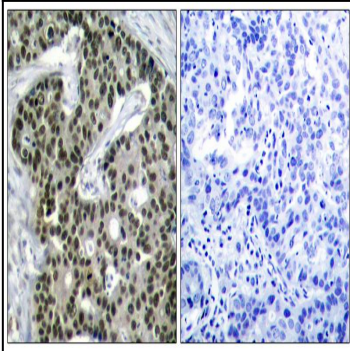


Figure 2: Immunohistochemical analysis of paraffin-embedded human breast carcinoma tissue using HSF1(Phospho-Ser303) Antibody 35-1242 (left) or the same antibody preincubated with blocking peptide(right).

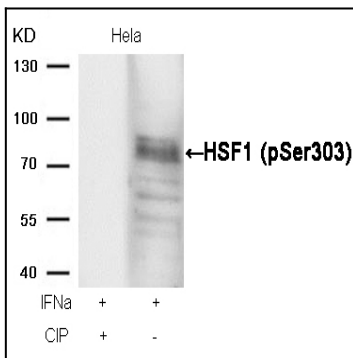


Figure 3: Western blot analysis of extracts from HeLa cells, treated with IFNa or calf intestinal phosphatase (CIP), using HSF1 (phospho-Ser303) Antibody 35-1242 .