

35-1239: Polyclonal Antibody to Connexin 43 (phospho-Ser367)

Clonality :	Polyclonal
Application :	WB,IHC
Reactivity :	Human,Mouse,Rat
Gene :	GJA1
Gene ID :	2697
Uniprot ID :	P17302
Format :	Purified
Alternative Name :	CX43, CXA1, CXN-43, GJA1
Isotype :	Rabbit IgG
Immunogen Information :	Peptide sequence around phosphorylation site of serine 368(R-A-S(p)-S-R) derived from Human Connexin 43.

Description

One gap junction consists of a cluster of closely packed pairs of transmembrane channels, the connexons, through which materials of low MW diffuse from one cell to a neighboring cell. May play a critical role in the physiology of hearing by participating in the recycling of potassium to the cochlear endolymph. Joell L. Solan¹, et al. (2003) Cell Science 116: 2203-2211 Satoshi Matsushita, et al. (2006) Histochemistry and Cytochemistry 54 (3): 343-353, Xiaoyong Bao, et al. (2004) Cell Physiol 286: C647-C654 W. E. I. Li, et al.(1998) European Journal of Neuroscience 10: 2444

Product Info

Amount :	50 µl / 100 µl
Content :	Supplied at 1.0mg/mL in phosphate buffered saline (without Mg ²⁺ and Ca ²⁺), pH 7.4, 150mM NaCl, 0.02% sodium azide and 50% glycerol.
Storage condition :	Store the antibody at 4°C, stable for 6 months. For long-term storage, store at -20°C. Avoid repeated freeze and thaw cycles.

Application Note

Predicted MW: 43kd, Western blotting: 1:500~1:1000, Immunohistochemistry: 1:50~1:100

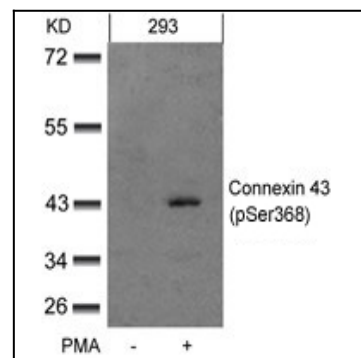


Figure 1: Western blot analysis of extracts from 293 cells untreated or treated with PMA using Connexin 43(phospho-Ser368) Antibody 35-1239 .

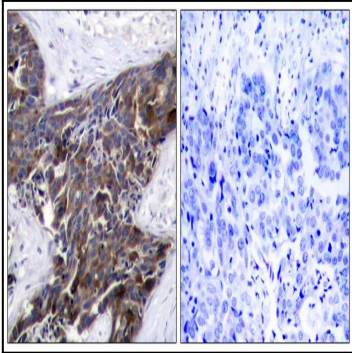


Figure 2: Immunohistochemical analysis of paraffin-embedded human breast carcinoma tissue using Connexin 43(Phospho-Ser367) Antibody 35-1239 (left) or the same antibody preincubated with blocking peptide(right).