

35-1233: Polyclonal Antibody to P38 MAPK (Phospho-Thr180)

Clonality :	Polyclonal
Application :	WB,IHC
Reactivity :	Human,Mouse,Rat
Gene :	MAPK14
Gene ID :	1432
Uniprot ID :	Q16539
Format :	Purified
Alternative Name :	MAPK2, MAPKAPK-2, MAPKAPK2
Isotype :	Rabbit IgG
Immunogen Information :	Peptide sequence around phosphorylation site of threonine 180 (E-M-T(p)-G-Y) derived from Human P38MAPK.

Description

Responds to activation by environmental stress, pro-inflammatory cytokines and lipopolysaccharide (LPS) by phosphorylating a number of transcription factors, such as ELK1 and ATF2 and several downstream kinases, such as MAPKAPK2 and MAPKAPK5. Plays a critical role in the production of some cytokines, for example IL-6. May play a role in stabilization of EPO mRNA during hypoxic stress. Isoform Mxi2 activation is stimulated by mitogens and oxidative stress and only poorly phosphorylates ELK1 and ATF2. Isoform Exip may play a role in the early onset of apoptosis. Kim JE, et al. (2005) J Proteome Res Jul-Aug; 4(4): 1339-1346 Meng F, et al. (2005) Am J Physiol Cell Physiol May 25 Jin ZH, et al. (2005) Oncogene Mar 17; 24(12): 1973-1981

Product Info

Amount :	50 μ l / 100 μ l
Content :	Supplied at 1.0mg/mL in phosphate buffered saline (without Mg ²⁺ and Ca ²⁺), pH 7.4, 150mM NaCl, 0.02% sodium azide and 50% glycerol.
Storage condition :	Store the antibody at 4°C, stable for 6 months. For long-term storage, store at -20°C. Avoid repeated freeze and thaw cycles.

Application Note

Predicted MW: 43kd, Western blotting: 1:500~1:1000, Immunohistochemistry: 1:50~1:100

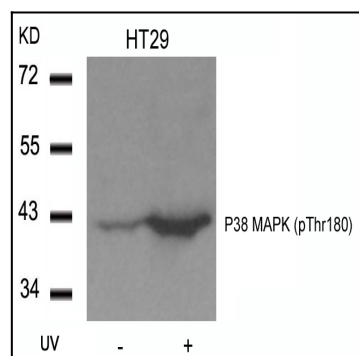


Figure 1: Western blot analysis of extracts from HT29 cells untreated or treated with UV using P38 MAPK(Phospho-Thr180) Antibody 35-1233 .

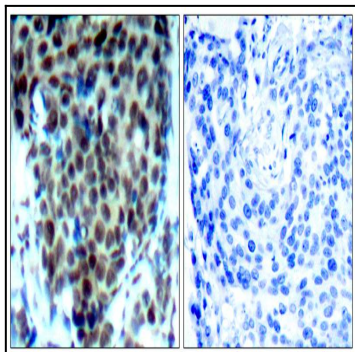


Figure 2: Immunohistochemical analysis of paraffin-embedded human breast carcinoma tissue using P38 MAPK(Phospho-Thr180) Antibody 35-1233 (left) or the same antibody preincubated with blocking peptide(right).

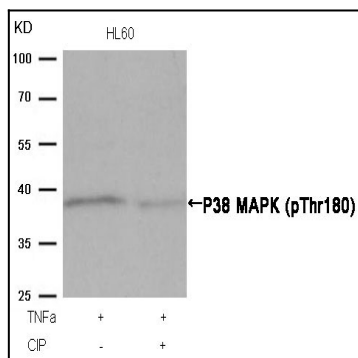


Figure 3: Western blot analysis of extracts from HL60 cells, treated with TNFα or calf intestinal phosphatase (CIP), using P38 MAPK (Phospho-Thr180) Antibody 35-1233 .