

35-1230: Polyclonal Antibody to HSP27 (Phospho-Ser82)

Clonality :	Polyclonal
Application :	WB,IHC
Reactivity :	Human
Gene :	HSPB1
Gene ID :	3315
Uniprot ID :	P04792
Format :	Purified
Alternative Name :	CMT2F,HMN2B,HSP27,HSP28,Hsp25
Isotype :	Rabbit IgG
Immunogen Information :	Peptide sequence around phosphorylation site of serine 82 (Q-L-S(p)-S-G) derived from Human HSP27.

Description

Involved in stress resistance and actin organization.

Product Info

Amount :	50 μ l / 100 μ l
Content :	Supplied at 1.0mg/mL in phosphate buffered saline (without Mg ²⁺ and Ca ²⁺), pH 7.4, 150mM NaCl, 0.02% sodium azide and 50% glycerol.
Storage condition :	Store the antibody at 4°C, stable for 6 months. For long-term storage, store at -20°C. Avoid repeated freeze and thaw cycles.

Application Note

Predicted MW: 27kd, Western blotting: 1:500~1:1000, Immunohistochemistry: 1:50~1:100

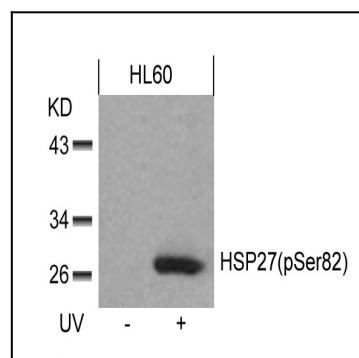


Figure 1: Western blot analysis of extracts from HL60 cells untreated or treated with UV using HSP27(Phospho-Ser82) Antibody 35-1230 .

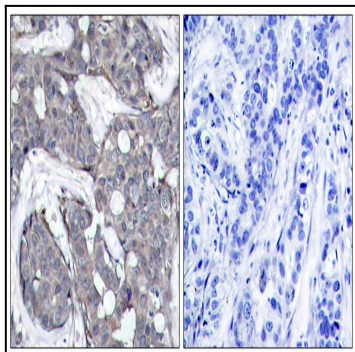


Figure 2: Immunohistochemical analysis of paraffin-embedded human breast carcinoma tissue using HSP27(Phospho-Ser82) Antibody 35-1230 (left) or the same antibody preincubated with blocking peptide(right).

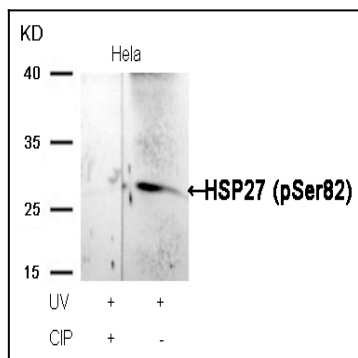


Figure 3: Western blot analysis of extracts from HeLa cells, treated with UV or calf intestinal phosphatase (CIP), using HSP27 (Phospho-Ser82) Antibody 35-1230 .