

## 35-1229: Polyclonal Antibody to HSP27 (Phospho-Ser78)

<b>Clonality :</b>	Polyclonal
<b>Application :</b>	WB,IHC,IF
<b>Reactivity :</b>	Human
<b>Gene :</b>	HSPB1
<b>Gene ID :</b>	3315
<b>Uniprot ID :</b>	P04792
<b>Format :</b>	Purified
<b>Alternative Name :</b>	28 kDa heat shock protein, Estrogen-regulated 24 kDa protein, Growth-related 25 kDa protein, HSP 27, HSP25
<b>Isotype :</b>	Rabbit IgG
<b>Immunogen Information :</b>	Peptide sequence around phosphorylation site of serine 78 (A-L-S(p)-R-Q) derived from Human HSP27.

### Description

Involved in stress resistance and actin organization.

### Product Info

<b>Amount :</b>	50 $\mu$ l / 100 $\mu$ l
<b>Content :</b>	Supplied at 1.0mg/mL in phosphate buffered saline (without Mg <sup>2+</sup> and Ca <sup>2+</sup> ), pH 7.4, 150mM NaCl, 0.02% sodium azide and 50% glycerol.
<b>Storage condition :</b>	Store the antibody at 4°C, stable for 6 months. For long-term storage, store at -20°C. Avoid repeated freeze and thaw cycles.

### Application Note

Predicted MW: 27kd, Western blotting: 1:500~1:1000, Immunohistochemistry: 1:50~1:100, Immunofluorescence: 1:100~1:200

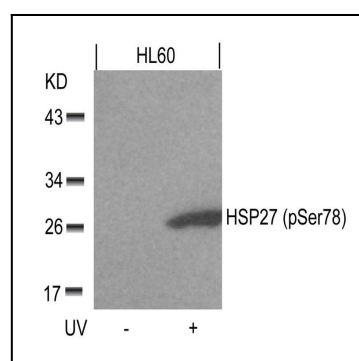


Figure 1: Western blot analysis of extracts from HL60 cells untreated or treated with UV using HSP27(Phospho-Ser78) Antibody 35-1229 .

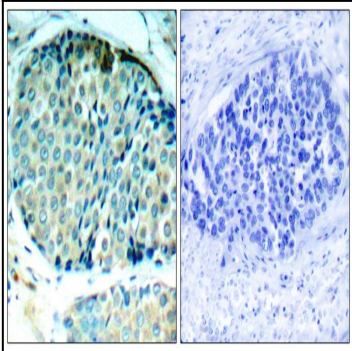


Figure 2: Immunohistochemical analysis of paraffin-embedded human breast carcinoma tissue using HSP27(Phospho-Ser78) Antibody 35-1229 (left) or the same antibody preincubated with blocking peptide(right).

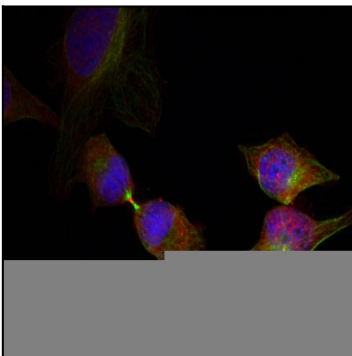


Figure 3: Immunofluorescence staining of methanol-fixed HeLa cells showing cytoplasmic, nuclear, centrosomal, midbody staining using HSP27(Phospho-Ser78) Antibody 35-1229 .