

35-1226: Polyclonal Antibody to CDC2 (Phospho-Tyr15)

| | |
|--------------------------------|--|
| Clonality : | Polyclonal |
| Application : | WB |
| Reactivity : | Human,Mouse,Rat |
| Gene : | CDK1 |
| Gene ID : | 983 |
| Uniprot ID : | P06493 |
| Format : | Purified |
| Alternative Name : | CDC28, CDC2A, CDK1, Cyclin-dependent kinase 1, Cell division control protein 2 homolog, p34 protein kinase |
| Isotype : | Rabbit IgG |
| Immunogen Information : | Peptide sequence around phosphorylation site of tyrosine 15 (G-T-Y(p)-G-V) derived from Human CDC2. |

Description

Plays a key role in the control of the eukaryotic cell cycle. It is required in higher cells for entry into S-phase and mitosis. p34 is a component of the kinase complex that phosphorylates the repetitive C-terminus of RNA polymerase II. Y Gu, et al. (1992) EMBO J. 11(11): 3995

Product Info

| | |
|----------------------------|--|
| Amount : | 50 µl / 100 µl |
| Content : | Supplied at 1.0mg/mL in phosphate buffered saline (without Mg ²⁺ and Ca ²⁺), pH 7.4, 150mM NaCl, 0.02% sodium azide and 50% glycerol. |
| Storage condition : | Store the antibody at 4°C, stable for 6 months. For long-term storage, store at -20°C. Avoid repeated freeze and thaw cycles. |

Application Note

Predicted MW: 34kd, Western blotting: 1:500~1:1000

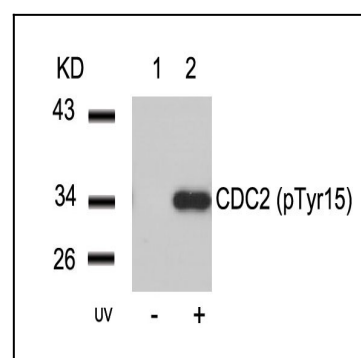


Figure 1: Western blot analysis of extracts from HeLa cells untreated(lane 1) or treated with UV(lane 2) using CDC2(Phospho-Tyr15) Antibody 35-1226 .

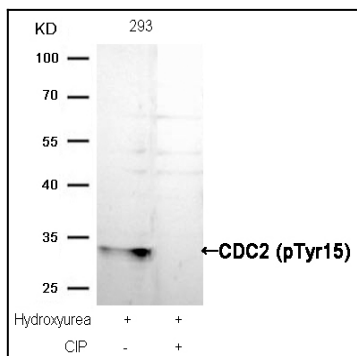


Figure 2: Western blot analysis of extracts from 293 cells, treated with Hydroxyurea or calf intestinal phosphatase (CIP), using CDC2 (Phospho-Tyr15) Antibody 35-1226 .

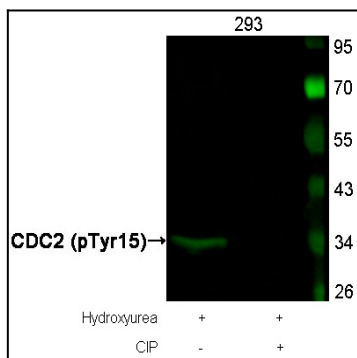


Figure 3: Western blot analysis of extracts from 293 cells, treated with Hydroxyurea or calf intestinal phosphatase (CIP), using CDC2 (Phospho-Tyr15) Antibody 35-1226 .