

35-1222: Polyclonal Antibody to Met (Phospho-Tyr1349)

Clonality :	Polyclonal
Application :	WB
Reactivity :	Human,Mouse,Rat
Gene :	MET
Gene ID :	4233
Uniprot ID :	P08581
Format :	Purified
Alternative Name :	HGF receptor, HGF-SF receptor, Met proto-oncogene tyrosine kinase, c-met, kinase Met
Isotype :	Rabbit IgG
Immunogen Information :	Peptide sequence around phosphorylation site of tyrosine 1349 (E-H-Y(p)-V-H) derived from Human Met.

Description

Receptor for hepatocyte growth factor and scatter factor. Has a tyrosine-protein kinase activity. Functions in cell proliferation, scattering, morphogenesis and survival.

Product Info

Amount :	50 μ l / 100 μ l
Content :	Supplied at 1.0mg/mL in phosphate buffered saline (without Mg ²⁺ and Ca ²⁺), pH 7.4, 150mM NaCl, 0.02% sodium azide and 50% glycerol.
Storage condition :	Store the antibody at 4°C, stable for 6 months. For long-term storage, store at -20°C. Avoid repeated freeze and thaw cycles.

Application Note

Predicted MW: 156kd, Western blotting: 1:500~1:1000

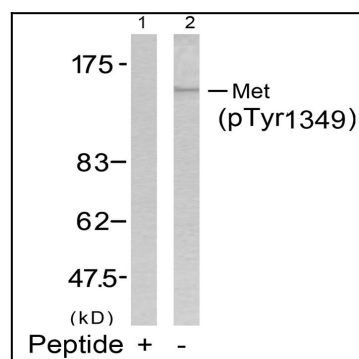


Figure 1: Western blot analysis of extracts from HepG2 cells using Met(Phospho-Tyr1349) Antibody 35-1222 (Lane 2) and the same antibody preincubated with blocking peptide(Lane1).