

35-1221: Polyclonal Antibody to BRCA1 (Phospho-Ser988)

Clonality :	Polyclonal
Application :	IF
Reactivity :	Human
Gene :	BRCA1
Gene ID :	672
Uniprot ID :	P38398
Format :	Purified
Alternative Name :	RNF53
Isotype :	Rabbit IgG
Immunogen Information :	Peptide sequence around phosphorylation site of serine 988 (I-K-S(p)-F-V) derived from Human BRCA1.

Description

The BRCA1-BARD1 heterodimer coordinates a diverse range of cellular pathways such as DNA damage repair, ubiquitination and transcriptional regulation to maintain genomic stability. Acts by mediating ubiquitin E3 ligase activity that is required for its tumor suppressor function. Plays a central role in DNA repair by facilitating cellular response to DNA repair. Required for appropriate cell cycle arrests after ionizing irradiation in both the S-phase and the G2 phase of the cell cycle. Involved in transcriptional regulation of P21 in response to DNA damage. Required for FANCD2 targeting to sites of DNA damage. May function as a transcriptional regulator. Inhibits lipid synthesis by binding to inactive phosphorylated ACACA and preventing its dephosphorylation Lin SY, et al. (2004) Proc Natl Acad Sci U S A, 101(17): 6484-6489 Zhang J, et al. (2004) Mol Cell Biol; 24(2): 708-718 Beger C, et al. (2001) Proc Natl Acad Sci U S A; 98(1): 130-135 Gardner K, et al. (2001) Breast Cancer Res; 3(1): 11-13 Zheng L, et al. (2001) Proc Natl Acad Sci U S A; 98(17): 9587-9592

Product Info

Amount :	50 µl / 100 µl
Content :	Supplied at 1.0mg/mL in phosphate buffered saline (without Mg ²⁺ and Ca ²⁺), pH 7.4, 150mM NaCl, 0.02% sodium azide and 50% glycerol.
Storage condition :	Store the antibody at 4°C, stable for 6 months. For long-term storage, store at -20°C. Avoid repeated freeze and thaw cycles.

Application Note

Predicted MW: 220kd, Immunofluorescence: 1:100~1:200

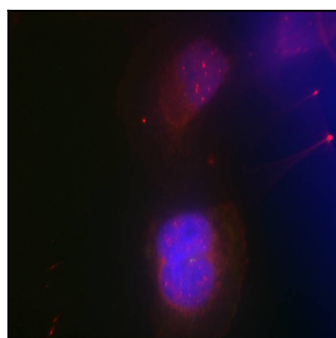


Figure 1: Immunofluorescence staining of methanol-fixed HeLa cells using BRCA1(Phospho-Ser988) Antibody 35-1221 .