

35-1217: Polyclonal Antibody to S6 Ribosomal Protein (Phospho-Ser235)

Clonality :	Polyclonal
Application :	WB,IF
Reactivity :	Human,Mouse,Rat
Gene :	RPS6
Gene ID :	6194
Uniprot ID :	P62753
Format :	Purified
Alternative Name :	NP33, RPS6, RS6
Isotype :	Rabbit IgG
Immunogen Information :	Peptide sequence around phosphorylation site of serine 235 (R-L-S(p)-S-L) derived from Human S6 Ribosomal Protein.

Description

May play an important role in controlling cell growth and proliferation through the selective translation of particular classes of mRNA.

Product Info

Amount :	50 µl / 100 µl
Content :	Supplied at 1.0mg/mL in phosphate buffered saline (without Mg ²⁺ and Ca ²⁺), pH 7.4, 150mM NaCl, 0.02% sodium azide and 50% glycerol.
Storage condition :	Store the antibody at 4°C, stable for 6 months. For long-term storage, store at -20°C. Avoid repeated freeze and thaw cycles.

Application Note

Predicted MW: 32kd, Western blotting: 1:500~1:1000, Immunofluorescence: 1:100~1:200

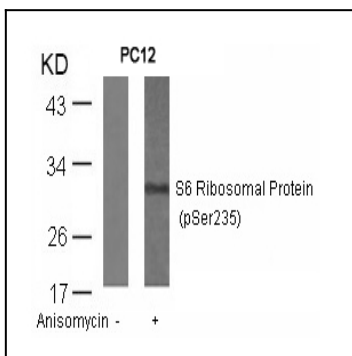


Figure 1: Western blot analysis of extracts from PC12 cells untreated or treated with anisomycin using S6 Ribosomal Protein(Phospho-Ser235) Antibody 35-1217 .

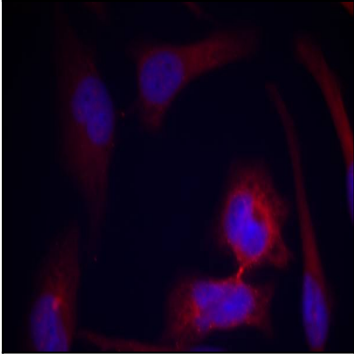


Figure 2: Immunofluorescence staining of methanol-fixed HeLa cells using S6 Ribosomal Protein(Phospho-Ser235) Antibody 35-1217 .