

35-1207: Polyclonal Antibody to mTOR (Phospho-Ser2448)

Clonality :	Polyclonal
Application :	WB,IHC,IF
Reactivity :	Human
Gene :	MTOR
Gene ID :	2475
Uniprot ID :	P42345
Format :	Purified
Alternative Name :	FRAP, FRAP1, FRAP2, RAFT1
Isotype :	Rabbit IgG
Immunogen Information :	Peptide sequence around phosphorylation site of serine 2448 (T-D-S(p)-Y-S) derived from Human mTOR.

Description

Kinase subunit of both mTORC1 and mTORC2, which regulate cell growth and survival in response to nutrient and hormonal signals. mTORC1 is activated in response to growth factors or amino-acids. Amino-acid-signaling to mTORC1 is mediated by Rag GTPases, which cause amino-acid-induced relocalization of mTOR within the endomembrane system. Growth factor-stimulated mTORC1 activation involves AKT1-mediated phosphorylation of TSC1-TSC2, which leads to the activation of the RHEB GTPase that potently activates the protein kinase activity of mTORC1. Activated mTORC1 up-regulates protein synthesis by phosphorylating key regulators of mRNA translation and ribosome synthesis. mTORC1 phosphorylates EIF4EBP1 and releases it from inhibiting the elongation initiation factor 4E (eIF4E). mTORC1 phosphorylates and activates S6K1 at 'Thr-421', which then promotes protein synthesis by phosphorylating PDCD4 and targeting it for degradation. mTORC2 is also activated by growth factors, but seems to be nutrient-insensitive. mTORC2 seems to function upstream of Rho GTPases to regulate the actin cytoskeleton, probably by activating one or more Rho-type guanine nucleotide exchange factors. mTORC2 promotes the serum-induced formation of stress-fibers or F-actin. mTORC2 plays a critical role in AKT1 'Ser-473' phosphorylation, which may facilitate the phosphorylation of the activation loop of AKT1 on 'Thr-308' by PDK1 which is a prerequisite for full activation. mTORC2 regulates the phosphorylation of SGK1 at 'Ser-422'. mTORC2 also modulates the phosphorylation of PRKCA on 'Ser-657'. Albanell J,et al.(2007)Clin Transl Oncol.9(8):484-93. Huang JJ,et al.

Product Info

Amount :	50 µl / 100 µl
Content :	Supplied at 1.0mg/mL in phosphate buffered saline (without Mg ²⁺ and Ca ²⁺), pH 7.4, 150mM NaCl, 0.02% sodium azide and 50% glycerol.
Storage condition :	Store the antibody at 4°C, stable for 6 months. For long-term storage, store at -20°C. Avoid repeated freeze and thaw cycles.

Application Note

Predicted MW: 289kd, Western blotting: 1:500~1:1000, Immunohistochemistry: 1:50~1:100, Immunofluorescence: 1:100~1:200

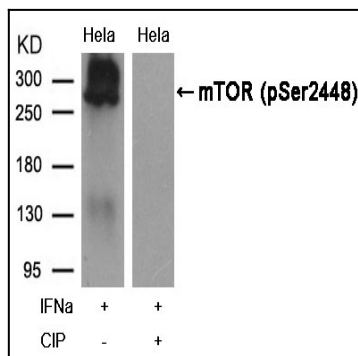


Figure 1: Western blot analysis of extracts from HeLa cells, treated with IFN α or calf intestinal phosphatase (CIP), using mTOR(Phospho-Ser2448) Antibody 35-1207 .

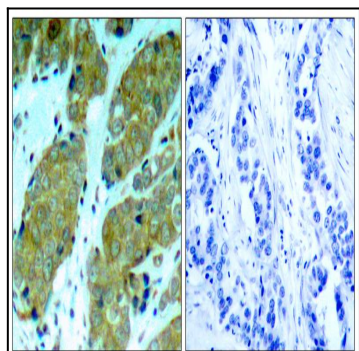


Figure 2: Immunohistochemical analysis of paraffin-embedded human breast carcinoma tissue using mTOR(Phospho-Ser2448) Antibody 35-1207 (left) or the same antibody preincubated with blocking peptide(right).

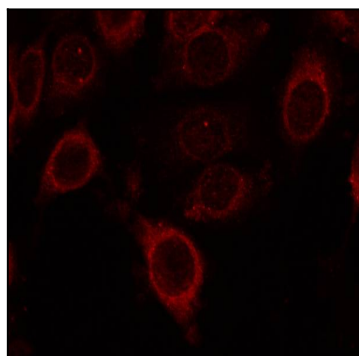


Figure 3: Immunofluorescence staining of methanol-fixed MCF cells using mTOR(Phospho-Ser2448) Antibody 35-1207 .

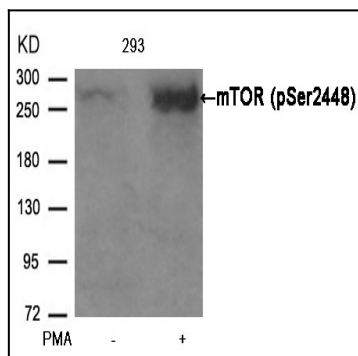


Figure 4: Western blot analysis of extracts from 293 cells untreated or treated with PMA using mTOR(Phospho-Ser2448) Antibody 35-1207 .

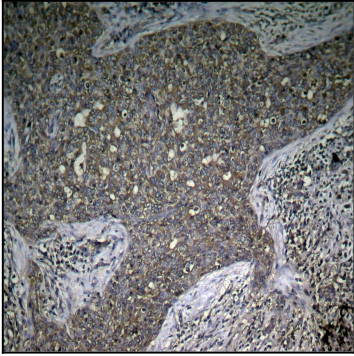


Figure 5 : Immunohistochemical analysis of paraffin-embedded human breast carcinoma tissue using mTOR (Phospho-Ser2448) Antibody 35-1207