

35-1199: Polyclonal Antibody to IκB-epsilon (Phospho-Ser22)

Clonality :	Polyclonal
Application :	IHC,WB
Reactivity :	Mouse,Human
Gene :	Nfkbie
Gene ID :	18037
Uniprot ID :	O54910
Format :	Purified
Alternative Name :	I-kappa-B-epsilon, IKBE, I kappa B epsilon, NF-kappa-BIE, NF-kappaB inhibitor epsilon
Isotype :	Rabbit IgG
Immunogen Information :	Peptide sequence around phosphorylation site of serine 22 (I-E-S(p)-L-R) derived from Mouse IκB-e.

Description

Inhibits NF-kappa-B by complexing with and trapping it in the cytoplasm. Inhibits DNA-binding of NF-kappa-B p50-p65 and p50-c-Rel complexes. Shirane M, et al. (1999) J Biol Chem; 274(40): 28169-74 Karin, M. and Ben-Neriah, Y. (2000) Annu. Rev. Immunol. ;18, 621-663. Chen, Z.J. et al. (1996) Cell; 84, 853-862. Brown, K. et al. (1995) Science; 267, 1485-1488.

Product Info

Amount :	50 µl / 100 µl
Content :	Supplied at 1.0mg/mL in phosphate buffered saline (without Mg ²⁺ and Ca ²⁺), pH 7.4, 150mM NaCl, 0.02% sodium azide and 50% glycerol.
Storage condition :	Store the antibody at 4°C, stable for 6 months. For long-term storage, store at -20°C. Avoid repeated freeze and thaw cycles.

Application Note

Predicted MW: 40kd, Western blotting: 1:500~1:1000, Immunohistochemistry: 1:50~1:100

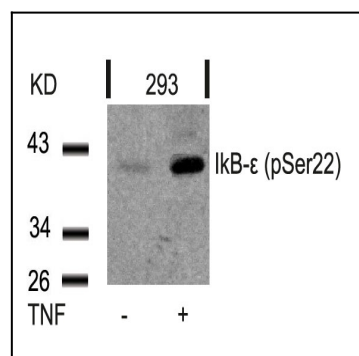


Figure 1: Western blot analysis of extracts from 293 cells untreated or treated with TNF using IκB-ε(Phospho-Ser22) Antibody 35-1199 .

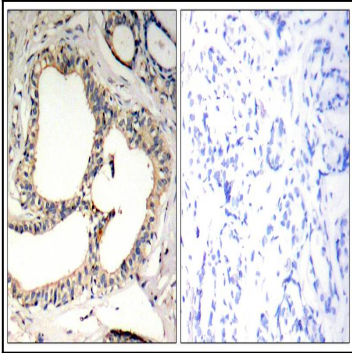


Figure 2: Immunohistochemical analysis of paraffin-embedded human breast carcinoma tissue using IκB-e(Phospho-Ser22) Antibody 35-1199 (left) or the same antibody preincubated with blocking peptide(right).