

35-1191: Polyclonal Antibody to Raf1 (Phospho-Ser338)

Clonality :	Polyclonal
Application :	WB
Reactivity :	Human,Mouse,Rat
Gene :	RAF1
Gene ID :	5894
Uniprot ID :	P04049
Format :	Purified
Alternative Name :	C-RAF, C-Raf, CRAF
Isotype :	Rabbit IgG
Immunogen Information :	Peptide sequence around phosphorylation site of serine 338 (R-D-S(p)-S-Y) derived from Human RAF.

Description

Involved in the transduction of mitogenic signals from the cell membrane to the nucleus. Part of the Ras-dependent signaling pathway from receptors to the nucleus. Protects cells from apoptosis mediated by STK3.

Product Info

Amount :	50 μ l / 100 μ l
Content :	Supplied at 1.0mg/mL in phosphate buffered saline (without Mg ²⁺ and Ca ²⁺), pH 7.4, 150mM NaCl, 0.02% sodium azide and 50% glycerol.
Storage condition :	Store the antibody at 4°C, stable for 6 months. For long-term storage, store at -20°C. Avoid repeated freeze and thaw cycles.

Application Note

Predicted MW: 73kd, Western blotting: 1:500~1:1000

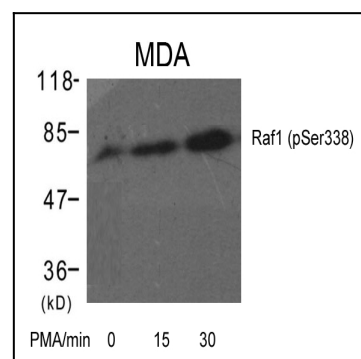


Figure 1: Western blot analysis of extracts from MDA cells untreated or treated with PMA for the indicated times using Raf1(Phospho-Ser338) Antibody 35-1191 .