

## 35-1185: Polyclonal Antibody to HSP90B (Phospho-Ser254)

<b>Clonality :</b>	Polyclonal
<b>Application :</b>	WB
<b>Reactivity :</b>	Human,Mouse
<b>Gene :</b>	HSP90AB1
<b>Gene ID :</b>	3326
<b>Uniprot ID :</b>	P08238
<b>Format :</b>	Purified
<b>Alternative Name :</b>	HS90B, HSP 84, HSP90-beta, HSP90AB1, HSPC2
<b>Isotype :</b>	Rabbit IgG
<b>Immunogen Information :</b>	Peptide sequence around phosphorylation site of serine 254 (V-G-S(p)-D-E) derived from Human HSP90B.

### Description

Molecular chaperone. Has ATPase activity. Zhao R, Houry WA.(2007) Adv Exp Med Biol; 594: 27-36. Olsen JV, et al. (2006) Cell; 127(3): 635-648 Ogiso H, et al. (2004) Biochemistry; 43(49): 15510-15519

### Product Info

<b>Amount :</b>	50 µl / 100 µl
<b>Content :</b>	Supplied at 1.0mg/mL in phosphate buffered saline (without Mg <sup>2+</sup> and Ca <sup>2+</sup> ), pH 7.4, 150mM NaCl, 0.02% sodium azide and 50% glycerol.
<b>Storage condition :</b>	Store the antibody at 4°C, stable for 6 months. For long-term storage, store at -20°C. Avoid repeated freeze and thaw cycles.

### Application Note

Predicted MW: 92kd, Western blotting: 1:500~1:1000

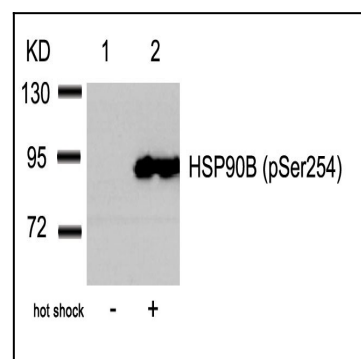


Figure 1: Western blot analysis of extracts from HeLa cells untreated(lane 1) or treated with hot shock(lane 2) using HSP90B(Phospho-Ser254) Antibody 35-1185 .

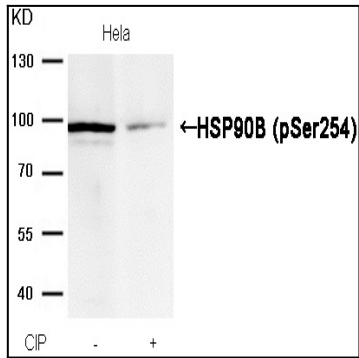


Figure 2: Western blot analysis of extracts from HeLa cells, treated with calf intestinal phosphatase (CIP), using HSP90B (Phospho-Ser254) Antibody 35-1185 .