

35-1184: Polyclonal Antibody to HSF1 (Phospho-Ser307)

Clonality :	Polyclonal
Application :	WB,IF
Reactivity :	Human
Gene :	HSF1
Gene ID :	3297
Uniprot ID :	Q00613
Format :	Purified
Alternative Name :	HSTF 1
Isotype :	Rabbit IgG
Immunogen Information :	Peptide sequence around phosphorylation site of serine 307 (P-Q-S(p)-P-R) derived from Human HSF1.

Description

DNA-binding protein that specifically binds heat shock promoter elements (HSE) and activates transcription. In higher eukaryotes, HSF is unable to bind to the HSE unless the cells are heat shocked. Guettouche T, et al. (2005) BMC Biochem ; 6(1): 4 Wang X, et al. (2003) Mol Cell Biol ; 23(17): 6013-6026 Jolly C, et al. (1999) Proc Natl Acad Sci USA; 96(12): 6769-6774.

Product Info

Amount :	50 μ l / 100 μ l
Content :	Supplied at 1.0mg/mL in phosphate buffered saline (without Mg ²⁺ and Ca ²⁺), pH 7.4, 150mM NaCl, 0.02% sodium azide and 50% glycerol.
Storage condition :	Store the antibody at 4°C, stable for 6 months. For long-term storage, store at -20°C. Avoid repeated freeze and thaw cycles.

Application Note

Predicted MW: 82kd, Western blotting: 1:500~1:1000, Immunofluorescence: 1:100~1:200

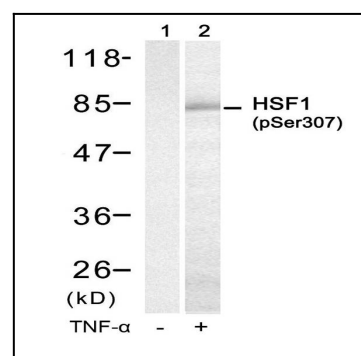


Figure 1: Western blot analysis of extracts from HUVEC cells untreated (lane 1) or treated with TNF- α (lane 2) using HSF1 (Phospho-Ser307) Antibody 35-1184.

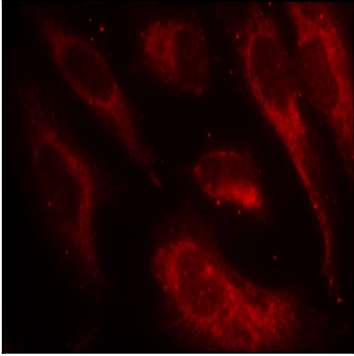


Figure 2: Immunofluorescence staining of methanol-fixed HeLa cells using HSF1(Phospho-Ser307) Antibody 35-1184 .

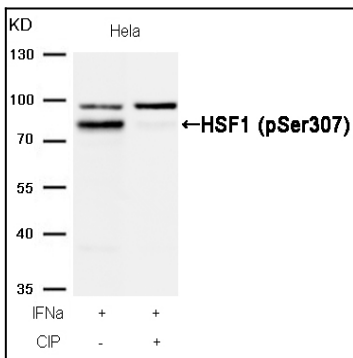


Figure 3: Western blot analysis of extracts from HeLa cells, treated with IFNa or calf intestinal phosphatase (CIP), using HSF1 (Phospho-Ser307) Antibody 35-1184 .