

## 35-1179: Polyclonal Antibody to Ephrin-B2 (Phospho-Tyr330)

<b>Clonality :</b>	Polyclonal
<b>Application :</b>	WB
<b>Reactivity :</b>	Human,Mouse,Rat
<b>Gene :</b>	EFNB2
<b>Gene ID :</b>	1948
<b>Uniprot ID :</b>	P52799
<b>Format :</b>	Purified
<b>Alternative Name :</b>	HTKL, EPLG5, Htk-L, LERK5, MGC126226
<b>Isotype :</b>	Rabbit IgG
<b>Immunogen Information :</b>	Peptide sequence around phosphorylation site of tyrosine 330 (N-I-Y(p)-Y-K) derived from Human Ephrin-B2

### Description

Adducins are a family of cytoskeleton proteins encoded by three genes (a, beta, gamma). Adducin is a heterodimeric protein that consists of related subunits, which are produced from distinct genes but share a similar structure. a- and beta-adducin include a protease-resistant N-terminal region and a protease-sensitive, hydrophilic C-terminal region. a- and gamma-adducins are ubiquitously expressed. In contrast, beta-adducin is expressed at high levels in brain and hematopoietic tissues. Adducin binds with high affinity to Ca(2+)/calmodulin and is a substrate for protein kinases A and C. Alternative splicing results in multiple variants encoding distinct isoforms; however, not all variants have been fully described.

### Product Info

<b>Amount :</b>	50 µl / 100 µl
<b>Content :</b>	Supplied at 1.0mg/mL in phosphate buffered saline (without Mg <sup>2+</sup> and Ca <sup>2+</sup> ), pH 7.4, 150mM NaCl, 0.02% sodium azide and 50% glycerol.
<b>Storage condition :</b>	Store the antibody at 4°C, stable for 6 months. For long-term storage, store at -20°C. Avoid repeated freeze and thaw cycles.

### Application Note

Predicted MW: 37kd, Western blotting: 1:500~1:1000

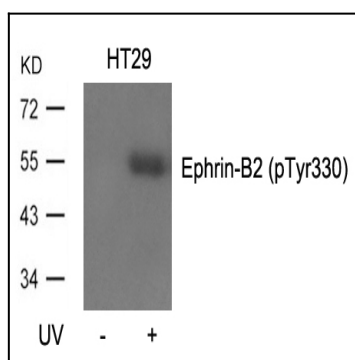


Figure 1: Western blot analysis of extracts from HT29 cells, untreated or treated with UV using Ephrin-B2(Phospho-Tyr330) Antibody 35-1179 .