

35-1178: Polyclonal Antibody to Ephrin-B2 (Phospho-Tyr316)

Clonality :	Polyclonal
Application :	WB
Reactivity :	Human,Mouse,Rat
Gene :	EFNB2
Gene ID :	1948
Uniprot ID :	P52799
Format :	Purified
Alternative Name :	HTKL, EPLG5, Htk-L, LERK5
Isotype :	Rabbit IgG
Immunogen Information :	Peptide sequence around phosphorylation site of tyrosine 316 (P-V-Y(p)-I-V) derived from Human Ephrin-B2

Description

This gene product belongs to the 14-3-3 family of proteins which mediate signal transduction by binding to phosphoserine-containing proteins. This highly conserved protein family is found in both plants and mammals, and this protein is 99% identical to the mouse, rat and sheep orthologs. The encoded protein interacts with IRS1 protein, suggesting a role in regulating insulin sensitivity. Several transcript variants that differ in the 5' UTR but that encode the same protein have been identified for this gene.

Product Info

Amount :	50 µl / 100 µl
Content :	Supplied at 1.0mg/mL in phosphate buffered saline (without Mg ²⁺ and Ca ²⁺), pH 7.4, 150mM NaCl, 0.02% sodium azide and 50% glycerol.
Storage condition :	Store the antibody at 4°C, stable for 6 months. For long-term storage, store at -20°C. Avoid repeated freeze and thaw cycles.

Application Note

Predicted MW: 37kd, Western blotting: 1:500~1:1000

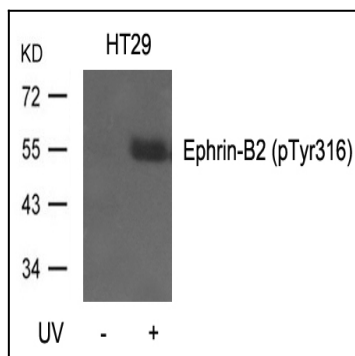


Figure 1: Western blot analysis of extracts from HT29 cells, untreated or treated with UV using Ephrin-B2(Phospho-Tyr316) Antibody 35-1178 .