

35-1164: Polyclonal Antibody to PKC Theta (Phospho-Ser695)

Clonality :	Polyclonal
Application :	WB,IHC
Reactivity :	Human
Gene :	PRKCQ
Gene ID :	5588
Uniprot ID :	Q04759
Format :	Purified
Alternative Name :	KPCT, PKC-theta, PKCQ, PRKCQ, PRKCT
Isotype :	Rabbit IgG
Immunogen Information :	Peptide sequence around phosphorylation site of serine 695 (N-F-S(p)-F-M) derived from Human PKCth.

Description

This is a calcium-independent, phospholipid-dependent, serine- and threonine-specific enzyme. Essential for T-cell receptor (TCR)-mediated T-cell activation, but is dispensable during TCR-dependent thymocyte development. Links the TCR signaling complex to the activation of NF-kappa-B in mature T lymphocytes. Required for interleukin-2 (IL2) production. PKC is activated by diacylglycerol which in turn phosphorylates a range of cellular proteins. PKC also serves as the receptor for phorbol esters, a class of tumor promoters.

Product Info

Amount :	50 µl / 100 µl
Content :	Supplied at 1.0mg/mL in phosphate buffered saline (without Mg2+ and Ca2+), pH 7.4, 150mM NaCl, 0.02% sodium azide and 50% glycerol.
Storage condition :	Store the antibody at 4°C, stable for 6 months. For long-term storage, store at -20°C. Avoid repeated freeze and thaw cycles.

Application Note

Predicted MW: 80kd, Western blotting: 1:500, Immunohistochemistry: 1:50~1:100

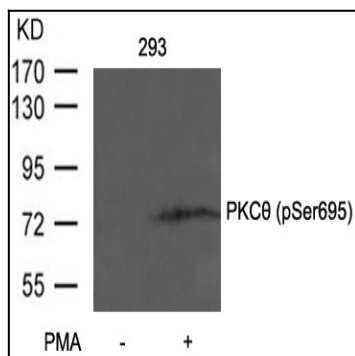


Figure 1: Western blot analysis of extracts from 293 cells untreated or treated with PMA using PKCth(Phospho-Ser695) Antibody 35-1164 .

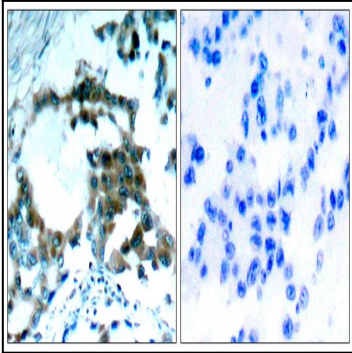


Figure 2: Immunohistochemical analysis of paraffin-embedded human lung carcinoma tissue using PKCth(Phospho-Ser695) Antibody 35-1164 (left) or the same antibody preincubated with blocking peptide(right).