

35-1157: Polyclonal Antibody to HSP27 (Phospho-Ser15)

Clonality :	Polyclonal
Application :	WB,IHC,IF
Reactivity :	Human
Gene :	HSPB1
Gene ID :	3315
Uniprot ID :	P04792
Format :	Purified
Alternative Name :	CMT2F,HMN2B,HSP27,HSP28,Hsp25
Isotype :	Rabbit IgG
Immunogen Information :	Peptide sequence around phosphorylation site of serine15 (G-P-S(p)-W-D) derived from Human HSP27.

Description

Involved in stress resistance and actin organization. Tremolada L, et al. (2005) Proteomics. 5(3): 788-795. McGregor E, et al. (2004) Mol Cell Proteomics. 3(2): 115-124. Benn SC, et al. (2002) Neuron. 36(1): 45-56. MacDonald JA, et al. (2002) Mol Cell Proteomics. 1(4): 314-322.

Product Info

Amount :	50 µl / 100 µl
Content :	Supplied at 1.0mg/mL in phosphate buffered saline (without Mg ²⁺ and Ca ²⁺), pH 7.4, 150mM NaCl, 0.02% sodium azide and 50% glycerol.
Storage condition :	Store the antibody at 4°C, stable for 6 months. For long-term storage, store at -20°C. Avoid repeated freeze and thaw cycles.

Application Note

Predicted MW: 27kd, Western blotting: 1:500~1:1000, Immunohistochemistry: 1:50~1:100, Immunofluorescence: 1:100~1:200

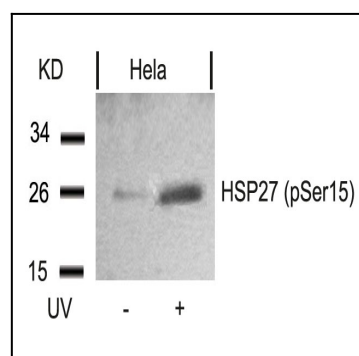


Figure 1: Western blot analysis of extracts from HeLa cells untreated or treated with UV using HSP27(Phospho-Ser15) Antibody 35-1157 .

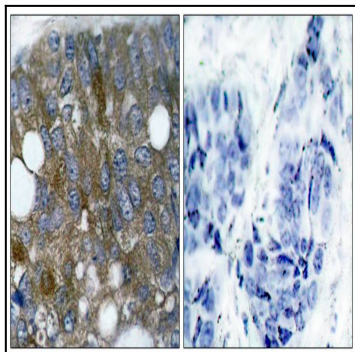


Figure 2: Immunohistochemical analysis of paraffin-embedded human breast carcinoma tissue using HSP27(Phospho-Ser15) Antibody 35-1157 (left) or the same antibody preincubated with blocking peptide(right).

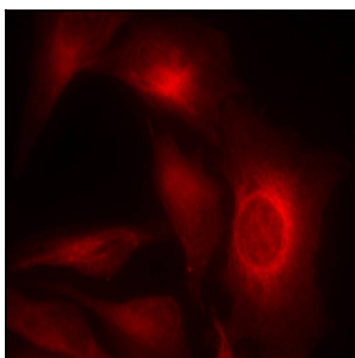


Figure 3: Immunofluorescence staining of methanol-fixed HeLa cells showing cytoplasmic staining using HSP27(Phospho-Ser15) Antibody 35-1157 .

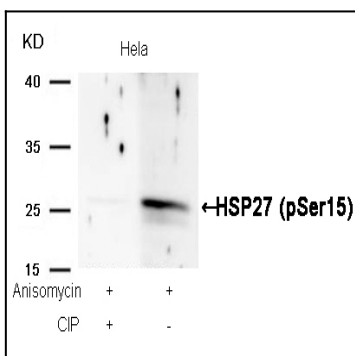


Figure 4: Western blot analysis of extracts from HeLa cells, treated with Anisomycin or calf intestinal phosphatase (CIP), using HSP27 (Phospho-Ser15) Antibody 35-1157 .