

35-1150: Polyclonal Antibody to FKHRL1(Phospho-Ser253)

| | |
|--------------------------------|-----------------------------------------------------------------------------------------------------|
| Clonality : | Polyclonal |
| Application : | WB,IHC,IF |
| Reactivity : | Human,Mouse,Rat |
| Gene : | FOXO3 |
| Gene ID : | 2309 |
| Uniprot ID : | O43524 |
| Format : | Purified |
| Alternative Name : | FOXO2, AF6q21, FKHRL1, FOXO3A, FKHRL1P2 |
| Isotype : | Rabbit IgG |
| Immunogen Information : | Peptide sequence around phosphorylation site of serine 253(A-V-S(p)-M-D) derived from Human FKHRL1. |

Description

Transcriptional activator which triggers apoptosis in the absence of survival factors, including neuronal cell death upon oxidative stress. Recognizes and binds to the DNA sequence 5'-[AG]TAAA[TC]A-3'. Participates in post-transcriptional regulation of MYC: following phosphorylation by MAPKAPK5, promotes induction of miR-34b and miR-34c expression, 2 post-transcriptional regulators of MYC that bind to the 3'UTR of MYC transcript and prevent its translation. Lehtinen M.K., Yuan Z., Boag P.R., Yang Y., Villen J., Becker E.B.E., DiBacco S., de la Iglesia N., Gygi S.P., Blackwell T.K., Bonni A. Cell 125:987-1001(2006) Morishita D., Katayama R., Sekimizu K., Tsuruo T., Fujita N. Cancer Res. 68:5076-5085(2008)

Product Info

| | |
|----------------------------|--------------------------------------------------------------------------------------------------------------------------------------------------------------|
| Amount : | 50 µl / 100 µl |
| Content : | Supplied at 1.0mg/mL in phosphate buffered saline (without Mg ²⁺ and Ca ²⁺), pH 7.4, 150mM NaCl, 0.02% sodium azide and 50% glycerol. |
| Storage condition : | Store the antibody at 4°C, stable for 6 months. For long-term storage, store at -20°C. Avoid repeated freeze and thaw cycles. |

Application Note

Predicted MW: 97kd, Western blotting: 1:500~1:1000, Immunohistochemistry: 1:50~1:100, Immunofluorescence: 1:100~1:200

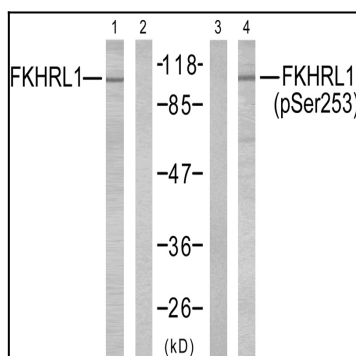


Figure 1: Western blot analysis of extracts from NIH/3T3 cells using FKHRL1 (Ab-253) antibody (35-1513, Lane 1 and 2) and FKHRL1 (phospho-Ser253) antibody (35-1150, Lane 3 and 4).

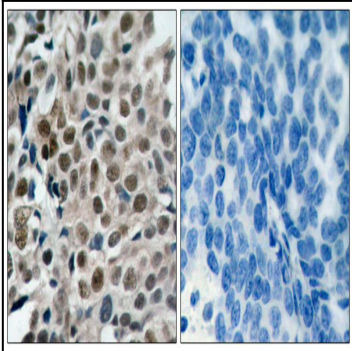


Figure 2: Immunohistochemical analysis of paraffin-embedded human breast carcinoma tissue using FKHRL1 (phospho-Ser253) antibody (35-1150).

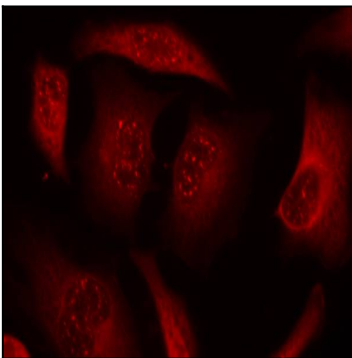


Figure 3: Immunofluorescence staining of methanol-fixed HeLa cells using FKHRL1 (phospho-Ser253) antibody (35-1150 , Red).