

35-1146: Polyclonal Antibody to IκB- Alpha (Phospho-Ser32/Ser36)

Clonality :	Polyclonal
Application :	IHC,WB,IF
Reactivity :	Mouse,Human
Gene :	NFKBIA
Gene ID :	4792
Uniprot ID :	P25963
Format :	Purified
Alternative Name :	I-kappa-B-alpha, IKBA, NF-kappaB inhibitor alpha, NFKBI, NFKBIA
Isotype :	Rabbit IgG
Immunogen Information :	Peptide sequence around phosphorylation site of serine 32/36 (H-D-S(p)-G-L-D-S(p)-M-K) derived from Human IκB-a.

Description

Inhibits the activity of dimeric NF-kappa-B/REL complexes by trapping REL dimers in the cytoplasm through masking of their nuclear localization signals. On cellular stimulation by immune and proinflammatory responses, becomes phosphorylated promoting ubiquitination and degradation, enabling the dimeric RELA to translocate to the nucleus and activate transcription.

Product Info

Amount :	50 μl / 100 μl
Content :	Supplied at 1.0mg/mL in phosphate buffered saline (without Mg ²⁺ and Ca ²⁺), pH 7.4, 150mM NaCl, 0.02% sodium azide and 50% glycerol.
Storage condition :	Store the antibody at 4°C, stable for 6 months. For long-term storage, store at -20°C. Avoid repeated freeze and thaw cycles.

Application Note

Predicted MW: 39kd, Western blotting: 1:500~1:1000, Immunohistochemistry: 1:50~1:100, Immunofluorescence: 1:100~1:200

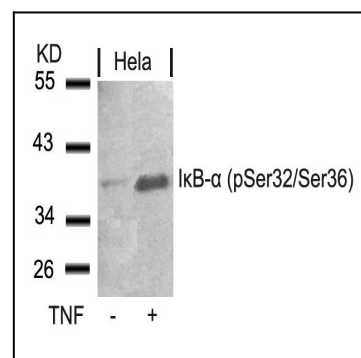


Figure 1: Western blot analysis of extracts from HeLa cells untreated or treated with TNF using IκB-a(Phospho-Ser32/Ser36) Antibody 35-1146 .

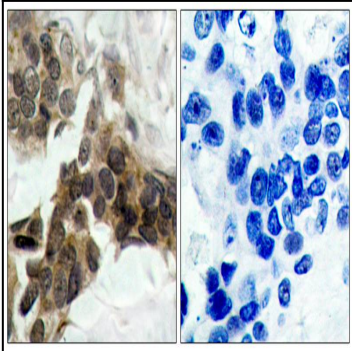


Figure 2: Immunohistochemical analysis of paraffin-embedded human breast carcinoma tissue using IκB-α(Phospho-Ser32/Ser36) Antibody 35-1146 (left) or the same antibody preincubated with blocking peptide(right).

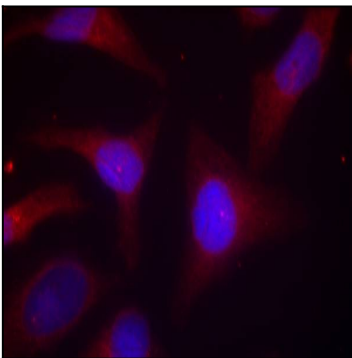


Figure 3: Immunofluorescence staining of methanol-fixed HeLa cells using IκB-α(Phospho-Ser32/Ser36) Antibody 35-1146 .