

35-1140: Polyclonal Antibody to MKK6 (Phospho-Ser207)

Clonality :	Polyclonal
Application :	WB,IHC,IF
Reactivity :	Human,Mouse,Rat
Gene :	MAP2K6
Gene ID :	5608
Uniprot ID :	P52564
Format :	Purified
Alternative Name :	MAP kinase kinase 6, MAP2K6, MAPK/ERK kinase 6, MAPKK 6, MEK6
Isotype :	Rabbit IgG
Immunogen Information :	Peptide sequence around phosphorylation site of serine 207 (V-D-S(p)-V-A) derived from Human MKK6.

Description

Catalyzes the concomitant phosphorylation of a threonine and a tyrosine residue in MAP kinase p38 exclusively. Wang W, et al. (2002) Mol Cell Biol ; 22(10): 3389-403. Raingeaud J, et al. (1996) Mol Cell Biol; 16(3): 1247-55.

Product Info

Amount :	50 μ l / 100 μ l
Content :	Supplied at 1.0mg/mL in phosphate buffered saline (without Mg ²⁺ and Ca ²⁺), pH 7.4, 150mM NaCl, 0.02% sodium azide and 50% glycerol.
Storage condition :	Store the antibody at 4°C, stable for 6 months. For long-term storage, store at -20°C. Avoid repeated freeze and thaw cycles.

Application Note

Predicted MW: 41kd, Western blotting: 1:500~1:1000, Immunohistochemistry: 1:50~1:100, Immunofluorescence: 1:100~1:200

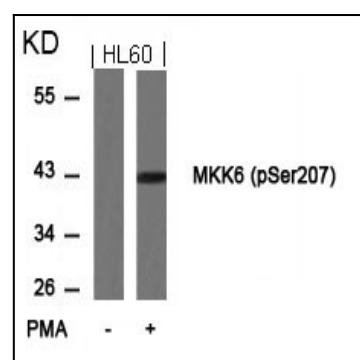


Figure 1: Western blot analysis of extracts from HL60 cells untreated or treated with PMA using MKK6(Phospho-Ser207) Antibody 35-1140 .

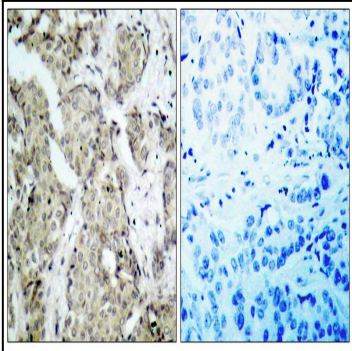


Figure 2: Immunohistochemical analysis of paraffin- embedded human breast carcinoma tissue using MKK6(Phospho-Ser207) Antibody 35-1140 (left) or the same antibody preincubated with blocking peptide(right).

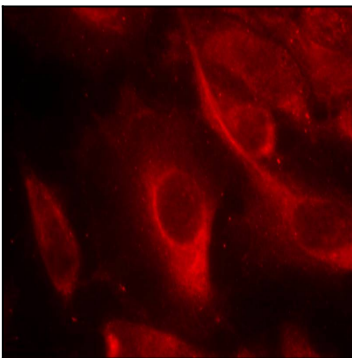


Figure 3: Immunofluorescence staining of methanol-fixed HeLa cells showing cytoplasmic staining using MKK6(Phospho-Ser207) Antibody 35-1140 .