

35-1139: Polyclonal Antibody to MKK3 (Phospho-Ser189)

Clonality :	Polyclonal
Application :	WB,IHC,IF
Reactivity :	Human,Mouse,Rat
Gene :	MAP2K3
Gene ID :	5606
Uniprot ID :	P46734
Format :	Purified
Alternative Name :	MAP kinase kinase 3, MAP2K3, MAPK/ERK kinase 3, MAPKK 3, MEK3
Isotype :	Rabbit IgG
Immunogen Information :	Peptide sequence around phosphorylation site of serine 189 (V-D-S(p)-V-A) derived from Human MKK3.

Description

Dual specificity kinase. Is activated by cytokines and environmental stress in vivo. Catalyzes the concomitant phosphorylation of a threonine and a tyrosine residue in the MAP kinase p38. Wang W, et al. (2002) Mol Cell Biol ; 22(10): 3389-403. Raingeaud J, et al. (1996) Mol Cell Biol; 16(3): 1247-55.

Product Info

Amount :	50 µl / 100 µl
Content :	Supplied at 1.0mg/mL in phosphate buffered saline (without Mg ²⁺ and Ca ²⁺), pH 7.4, 150mM NaCl, 0.02% sodium azide and 50% glycerol.
Storage condition :	Store the antibody at 4°C, stable for 6 months. For long-term storage, store at -20°C. Avoid repeated freeze and thaw cycles.

Application Note

Predicted MW: 40kd, Western blotting: 1:500~1:1000, Immunohistochemistry: 1:50~1:100, Immunofluorescence: 1:100~1:200

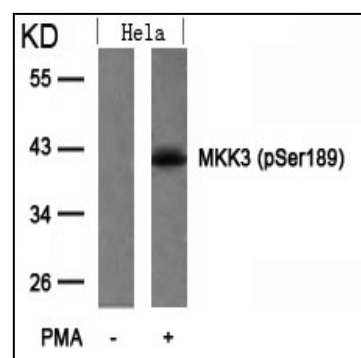


Figure 1: Western blot analysis of extracts from HeLa cells untreated or treated with PMA using MKK3(Phospho-Ser189) Antibody 35-1139 .

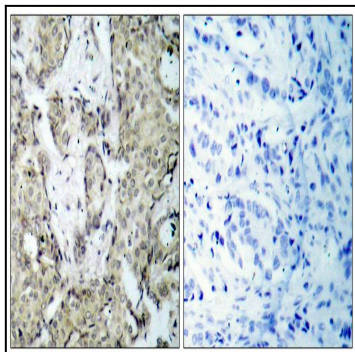


Figure 2: Immunohistochemical analysis of paraffin-embedded human breast carcinoma tissue using MKK3(Phospho-Ser189) Antibody 35-1139 (left) or the same antibody preincubated with blocking peptide(right).

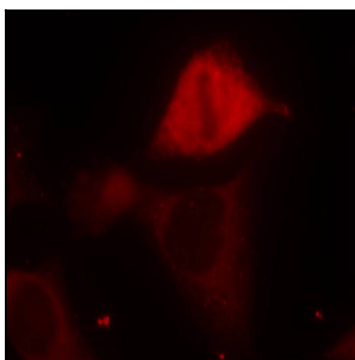


Figure 3: Immunofluorescence staining of methanol-fixed HeLa cells using MKK3(Phospho-Ser189) Antibody 35-1139 .

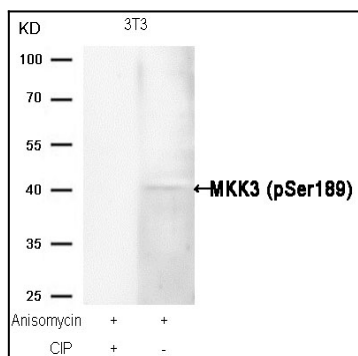


Figure 4: Western blot analysis of extracts from 3T3 cells, treated with Anisomycin or calf intestinal phosphatase (CIP), using MKK3 (Phospho-Ser189) Antibody 35-1139 .