

35-1131: Polyclonal Antibody to FKHR (Phospho-Ser319)

Clonality :	Polyclonal
Application :	WB,IHC,IF
Reactivity :	Human,Mouse,Rat
Gene :	FOXO1
Gene ID :	2308
Uniprot ID :	Q12778
Format :	Purified
Alternative Name :	FOXO1
Isotype :	Rabbit IgG
Immunogen Information :	Peptide sequence around phosphorylation site of serine 319 (T-S-S(p)-N-A) derived from Human FKHR/FOXO1A.

Description

FKHR belongs to the forkhead family of transcription factors, which are characterized by a distinct forkhead domain. It may play a role in myogenic growth and differentiation. The mammalian DAF-16-like transcription factors, FKHR, FKHL1, and AFX, function as key regulators of insulin signaling, cell cycle progression, and apoptosis downstream of phosphoinositide 3-kinase. Gene activation through binding to insulin response sequences has been essential for mediating these functions. D-type Cyclins (in Class III) is required for FKHR mediated inhibition of cell cycle progression and transformation. FKHR gene is mapped to chromosome 13q14. Rena G, et al. (2002) EMBO J 21(9): 2263-2271. Woods YL, et al. (2001) Biochem J 355(Pt 3): 597-607. Rena G, et al. (2001) Biochem J 354(Pt 3): 605-612.

Product Info

Amount :	50 µl / 100 µl
Content :	Supplied at 1.0mg/mL in phosphate buffered saline (without Mg ²⁺ and Ca ²⁺), pH 7.4, 150mM NaCl, 0.02% sodium azide and 50% glycerol.
Storage condition :	Store the antibody at 4°C, stable for 6 months. For long-term storage, store at -20°C. Avoid repeated freeze and thaw cycles.

Application Note

Predicted MW: 78-82 kd, Western blotting: 1:500~1:1000, Immunohistochemistry: 1:50~1:100, Immunofluorescence: 1:100~1:200

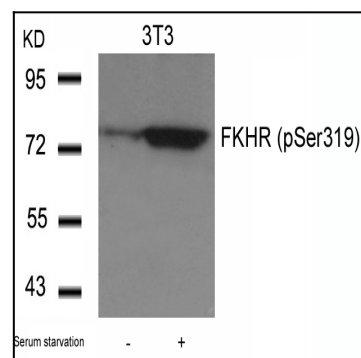


Figure 1: Western blot analysis of extracts from 3T3 cells untreated or treated with serum starvation using FKHR(Phospho-Ser319) Antibody 35-1131 .

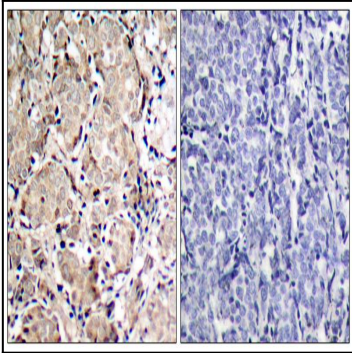


Figure 2: Immunohistochemical analysis of paraffin-embedded human breast carcinoma tissue using FKHR(Phospho-Ser319) Antibody 35-1131 (left) or the same antibody preincubated with blocking peptide(right).

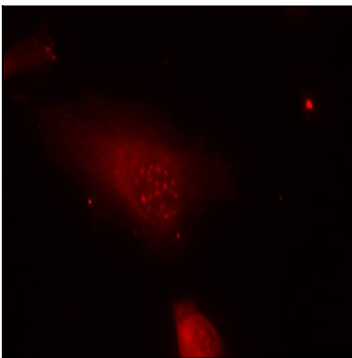


Figure 3: Immunofluorescence staining of methanol-fixed HeLa cells using FKHR(Phospho-Ser319) Antibody 35-1131 .