

35-1123: Polyclonal Antibody to LIMK2 (Phospho-Thr505)

| | |
|--------------------------------|--|
| Clonality : | Polyclonal |
| Application : | WB,IHC,IF |
| Reactivity : | Human,Mouse,Rat |
| Gene : | LIMK2 |
| Gene ID : | 3985 |
| Uniprot ID : | P53671 |
| Format : | Purified |
| Alternative Name : | LIMK-2, kinase LIMK2 |
| Isotype : | Rabbit IgG |
| Immunogen Information : | Peptide sequence around phosphorylation site of threonine 505 (R-Y-T(p)-V-V) derived from Human LIMK2. |

Description

Displays serine/threonine-specific phosphorylation of myelin basic protein and histone (MBP) in vitro.

Product Info

| | |
|----------------------------|--|
| Amount : | 50 μ l / 100 μ l |
| Content : | Supplied at 1.0mg/mL in phosphate buffered saline (without Mg ²⁺ and Ca ²⁺), pH 7.4, 150mM NaCl, 0.02% sodium azide and 50% glycerol. |
| Storage condition : | Store the antibody at 4°C, stable for 6 months. For long-term storage, store at -20°C. Avoid repeated freeze and thaw cycles. |

Application Note

Predicted MW: 70kd, Western blotting: 1:500~1:1000, Immunohistochemistry: 1:50~1:100, Immunofluorescence: 1:100~1:200

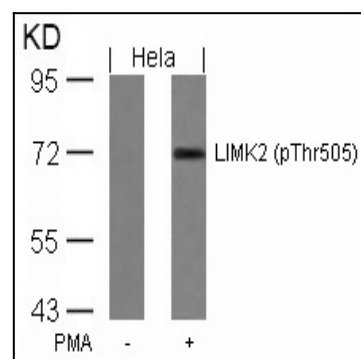


Figure 1: Western blot analysis of extracts from HeLa cells untreated or treated with PMA using LIMK2(Phospho-Thr505) Antibody 35-1123 .

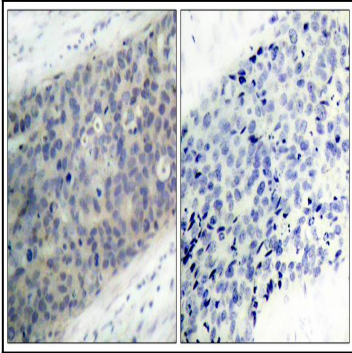


Figure 2: Immunohistochemical analysis of paraffin-embedded human breast carcinoma tissue using LIMK2(Phospho-Thr505) Antibody 35-1123 (left) or the same antibody preincubated with blocking peptide(right).

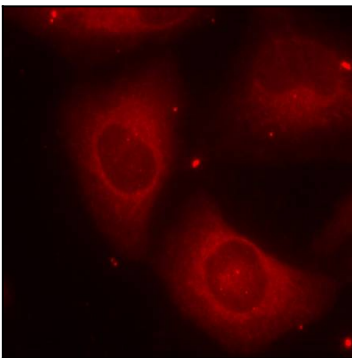


Figure 3: Immunofluorescence staining of methanol-fixed HeLa cells using LIMK2(Phospho-Thr505) Antibody 35-1123 .