

### 35-1122: Polyclonal Antibody to LIMK1 (Phospho-Thr508)

<b>Clonality :</b>	Polyclonal
<b>Application :</b>	WB,IHC,IF
<b>Reactivity :</b>	Human,Mouse,Rat
<b>Gene :</b>	LIMK1
<b>Gene ID :</b>	3984
<b>Uniprot ID :</b>	P53667
<b>Format :</b>	Purified
<b>Alternative Name :</b>	LIMK-1, kinase LIMK1
<b>Isotype :</b>	Rabbit IgG
<b>Immunogen Information :</b>	Peptide sequence around phosphorylation site of threonine 508 (R-Y-T(p)-V-V) derived from Human LIMK1.

#### Description

Protein kinase which regulates actin filament dynamics. Phosphorylates and inactivates the actin binding/depolymerizing factor cofilin, thereby stabilizing the actin cytoskeleton. Isoform 3 has a dominant negative effect on actin cytoskeletal changes. May be involved in brain development.

#### Product Info

<b>Amount :</b>	50 µl / 100 µl
<b>Content :</b>	Supplied at 1.0mg/mL in phosphate buffered saline (without Mg <sup>2+</sup> and Ca <sup>2+</sup> ), pH 7.4, 150mM NaCl, 0.02% sodium azide and 50% glycerol.
<b>Storage condition :</b>	Store the antibody at 4°C, stable for 6 months. For long-term storage, store at -20°C. Avoid repeated freeze and thaw cycles.

#### Application Note

Predicted MW: 72kd, Western blotting: 1:500~1:1000, Immunohistochemistry: 1:50~1:100, Immunofluorescence: 1:100~1:200

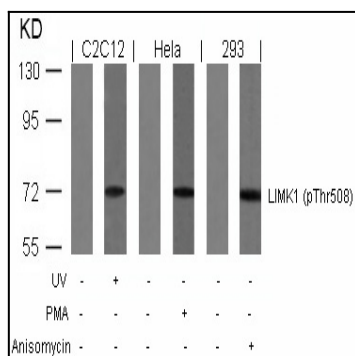


Figure 1: Western blot analysis of extracts from UV-treated C2C12, PMA-treated HeLa and anisomycin-treated 293 cells using LIMK1(Phospho-Thr508) Antibody 35-1122 .

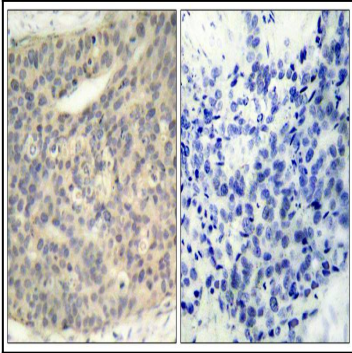


Figure 2: Immunohistochemical analysis of paraffin-embedded human breast carcinoma tissue using LIMK1(Phospho-Thr508) Antibody 35-1122 (left) or the same antibody preincubated with blocking peptide(right).

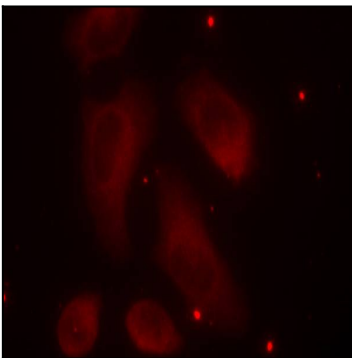


Figure 3: Immunofluorescence staining of methanol-fixed HeLa cells using LIMK1(Phospho-Thr508) Antibody 35-1122 .