

## 35-1121: Polyclonal Antibody to c-Abl(Phospho-Tyr412)

<b>Clonality :</b>	Polyclonal
<b>Application :</b>	IHC,IF
<b>Reactivity :</b>	Human,Mouse,Rat
<b>Gene :</b>	ABL1
<b>Gene ID :</b>	25
<b>Uniprot ID :</b>	P00519 /P42684
<b>Format :</b>	Purified
<b>Alternative Name :</b>	ABL,JTK7,p150,c-ABL
<b>Isotype :</b>	Rabbit IgG

### Product Info

<b>Amount :</b>	50 $\mu$ l / 100 $\mu$ l
<b>Content :</b>	1.0 mg/ml,100 $\mu$ l
<b>Storage condition :</b>	Store the antibody at 4°C, stable for 6 months. For long-term storage, store at -20°C. Avoid repeated freeze and thaw cycles.

### Application Note

Immunohistochemistry: 1:50~1:100, Immunofluorescence: 1:100~1:200

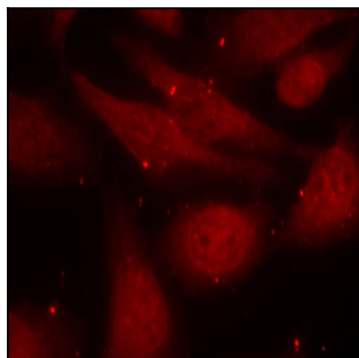


Figure 1: Immunofluorescence staining of methanol-fixed HeLa cells using c-Abl (phospho-Tyr412) antibody (35-1121, Red).

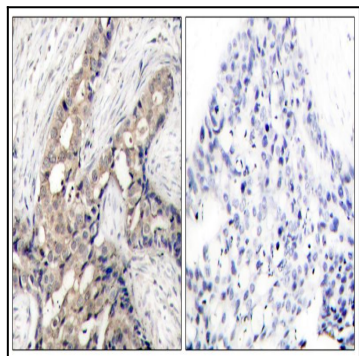


Figure 2: Immunohistochemical analysis of paraffin-embedded human breast carcinoma tissue using c-Abl (phospho-Tyr412) antibody (35-1121).