

35-1120: Polyclonal Antibody to Akt2 (Phospho-Ser474)

Clonality :	Polyclonal
Application :	WB,IHC
Reactivity :	Human,Mouse,Rat
Gene :	AKT2
Gene ID :	208
Uniprot ID :	P31751
Format :	Purified
Alternative Name :	PKB beta, Protein kinase B, RAC-PK-beta
Isotype :	Rabbit IgG
Immunogen Information :	Peptide sequence around phosphorylation site of serine 474 (Q-F-S(p)-Y-S) derived from Human Akt2.

Description

General protein kinase capable of phosphorylating several known proteins. Sun M, et al. (2001) Cancer Res; 61(16): 5985-91. Yuan ZQ, et al. (2000) Oncogene; 19(19): 2324-30. Meier R, et al. (1997) J Biol Chem; 272(48): 30491-7.

Product Info

Amount :	50 µl / 100 µl
Content :	Supplied at 1.0mg/mL in phosphate buffered saline (without Mg ²⁺ and Ca ²⁺), pH 7.4, 150mM NaCl, 0.02% sodium azide and 50% glycerol.
Storage condition :	Store the antibody at 4°C, stable for 6 months. For long-term storage, store at -20°C. Avoid repeated freeze and thaw cycles.

Application Note

Predicted MW: 60kd, Western blotting: 1:500~1:1000, Immunohistochemistry: 1:50~1:100

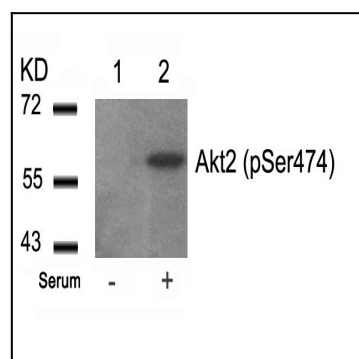


Figure 1: Western blot analysis of extracts from 293 cells untreated(lane 1) or treated with serum(lane 2) using Akt2(Phospho-Ser474) Antibody 35-1120 .

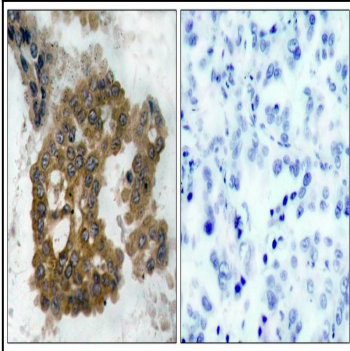


Figure 2: Immunohistochemical analysis of paraffin-embedded human lung carcinoma tissue using Akt2(Phospho-Ser474) Antibody 35-1120 (left) or the same antibody preincubated with blocking peptide(right).

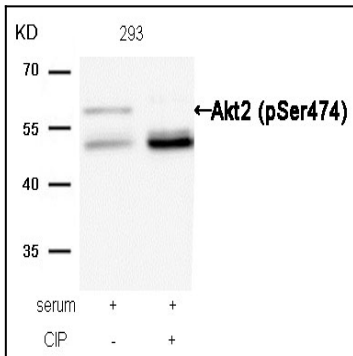


Figure 3: Western blot analysis of extracts from 293 cells, treated with serum or calf intestinal phosphatase (CIP), using Akt2 (Phospho-Ser474) Antibody 35-1120 .