

## 35-1113: Polyclonal Antibody to beta-Catenin (Phospho-Thr41/Ser45)

<b>Clonality :</b>	Polyclonal
<b>Application :</b>	WB
<b>Reactivity :</b>	Human,Mouse,Rat
<b>Gene :</b>	CTNNB1
<b>Gene ID :</b>	1499
<b>Uniprot ID :</b>	P35222
<b>Format :</b>	Purified
<b>Alternative Name :</b>	CTNNB1, CATNB, CTNB1, CTNNB
<b>Isotype :</b>	Rabbit IgG
<b>Immunogen Information :</b>	Peptide sequence around phosphorylation site of threonine 41/serine 45 (A-T-T(p)-T-A-P-S(p)-L-S) derived from Human b-Catenin.

### Description

Involved in the regulation of cell adhesion and in signal transduction through the Wnt pathway. Provost E, et al. (2003) J Biol Chem 278(34): 31781-9. Sakanaka C, et al. (2003) J Biochem (Tokyo); 132(5): 697-703. Amit S, et al. (2002) Genes Dev; 16(9): 1066-76. Liu C, et al. (2002) Cell; 108(6): 837-47. Provost E, et al. (2005) Oncogene; 24(16): 2667-76.

### Product Info

<b>Amount :</b>	50 µl / 100 µl
<b>Content :</b>	Supplied at 1.0mg/mL in phosphate buffered saline (without Mg <sup>2+</sup> and Ca <sup>2+</sup> ), pH 7.4, 150mM NaCl, 0.02% sodium azide and 50% glycerol.
<b>Storage condition :</b>	Store the antibody at 4°C, stable for 6 months. For long-term storage, store at -20°C. Avoid repeated freeze and thaw cycles.

### Application Note

Predicted MW: 92kd, Western blotting: 1:500~1:1000

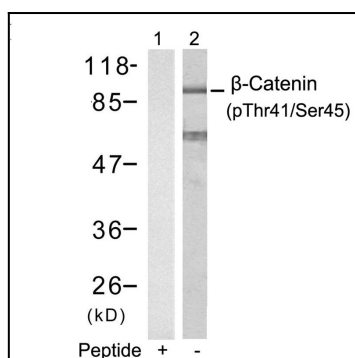


Figure 1: Western blot analysis of extracts from SW626 cells using b-Catenin(Phospho-Thr41/Ser45) Antibody 35-1113 (Lane 2) and the same antibody preincubated with blocking peptide(Lane1).