

## 35-1110: Polyclonal Antibody to p90RSK (Phospho-Ser352)

<b>Clonality :</b>	Polyclonal
<b>Application :</b>	WB
<b>Reactivity :</b>	Human,Mouse,Rat
<b>Gene :</b>	Rps6ka1
<b>Gene ID :</b>	20111
<b>Uniprot ID :</b>	P18653
<b>Format :</b>	Purified
<b>Alternative Name :</b>	MAPKAP-K1a, RSK-1, RSK1
<b>Isotype :</b>	Rabbit IgG
<b>Immunogen Information :</b>	Peptide sequence around phosphorylation site of serine 352 (R-D-S(p)-P-G) derived from Human p90RSK.

### Description

Serine/threonine kinase that may play a role in mediating the growth-factor and stress induced activation of the transcription factor CREB. Silverman E, et al. Mol Cell Biol. 2004 Dec; 24(24): 10573-10583. Itoh S, et al. J Biol Chem 2005 Jun 24; 280(25): 24135-24142 Eisenmann KM, et al. Cancer Res 2003 Dec 01; 63(23): 8330-7

### Product Info

<b>Amount :</b>	50 µl / 100 µl
<b>Content :</b>	Supplied at 1.0mg/mL in phosphate buffered saline (without Mg <sup>2+</sup> and Ca <sup>2+</sup> ), pH 7.4, 150mM NaCl, 0.02% sodium azide and 50% glycerol.
<b>Storage condition :</b>	Store the antibody at 4°C, stable for 6 months. For long-term storage, store at -20°C. Avoid repeated freeze and thaw cycles.

### Application Note

Predicted MW: 90kd, Western blotting: 1:500~1:1000

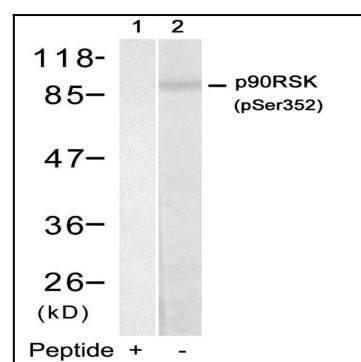


Figure 1: Western blot analysis of extracts from HUVEC cells using p90RSK(Phospho-Ser352) Antibody 35-1110 (Lane 2) and the same antibody preincubated with blocking peptide(Lane1).

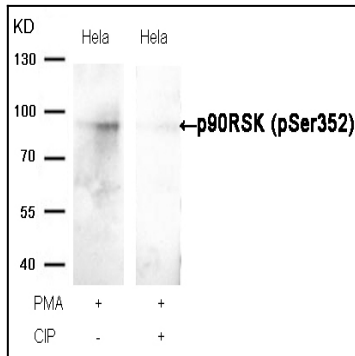


Figure 2: Western blot analysis of extracts from HeLa cells, treated with PMA or calf intestinal phosphatase (CIP), using p90RSK (Phospho-Ser352) Antibody 35-1110 .