

## 35-1109: Polyclonal Antibody to Tau (Phospho-Ser404)

<b>Clonality :</b>	Polyclonal
<b>Application :</b>	IHC,WB,IF
<b>Reactivity :</b>	Rat,Mouse,Human
<b>Gene :</b>	MAPT
<b>Gene ID :</b>	4137
<b>Uniprot ID :</b>	P10636
<b>Format :</b>	Purified
<b>Alternative Name :</b>	MAPT, MTAPT, MTBT1, Neurofibrillary tangle protein, PHF-tau
<b>Isotype :</b>	Rabbit IgG
<b>Immunogen Information :</b>	Peptide sequence around phosphorylation site of serine 404 (D-T-S(p)-P-R) derived from Human Tau.

### Description

Promotes microtubule assembly and stability, and might be involved in the establishment and maintenance of neuronal polarity. The C-terminus binds axonal microtubules while the N-terminus binds neural plasma membrane components, suggesting that tau functions as a linker protein between both. Axonal polarity is predetermined by tau localization (in the neuronal cell) in the domain of the cell body defined by the centrosome. The short isoforms allow plasticity of the cytoskeleton whereas the longer isoforms may preferentially play a role in its stabilization. Li G, Yin H, et.al.(2004) J Biol Chem ; 279(16): 15938-45. Noble W, et al. (2003) Neuron ; 38(4): 555-65. Giasson BI, et al.(2002). Biochemistry; 41(51): 15376-87. Lee G., et.al. (1989). Neuron 2:1615-1624. Andreadis A.et.al. (1992) Biochemistry 31:10626-10633.

### Product Info

<b>Amount :</b>	50 µl / 100 µl
<b>Content :</b>	Supplied at 1.0mg/mL in phosphate buffered saline (without Mg <sup>2+</sup> and Ca <sup>2+</sup> ), pH 7.4, 150mM NaCl, 0.02% sodium azide and 50% glycerol.
<b>Storage condition :</b>	Store the antibody at 4°C, stable for 6 months. For long-term storage, store at -20°C. Avoid repeated freeze and thaw cycles.

### Application Note

Predicted MW: 48 62 78 kd, Western blotting: 1:500~1:1000, Immunohistochemistry: 1:50~1:100, Immunofluorescence: 1:100~1:200

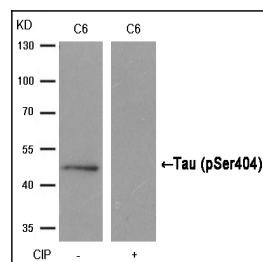


Figure 1: Western blot analysis of extracts from C6 cells, treated with calf intestinal phosphatase (CIP), using Tau (Phospho-Ser404) Antibody 35-1109 .

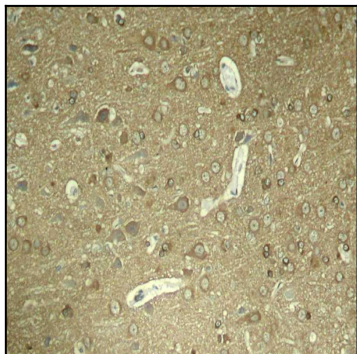


Figure 2: Immunohistochemical analysis of paraffin-embedded rat hippocampal region tissue from a model with Alzheimer

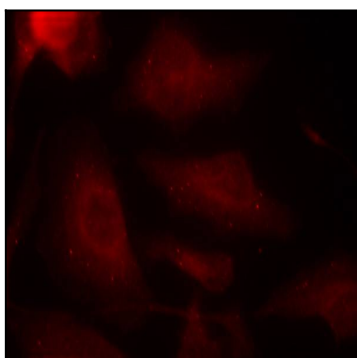


Figure 3: Immunofluorescence staining of methanol-fixed Hela cells using Tau(Phospho-Ser404) Antibody 35-1109 .

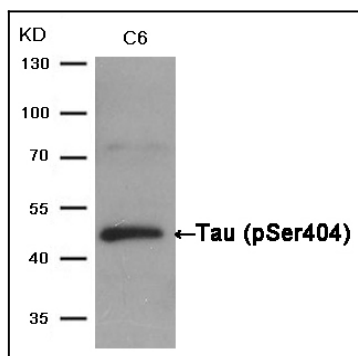


Figure 4: Western blot analysis of extracts from C6 cells using Tau(Phospho-Ser404) Antibody 35-1109 .