

35-1100: Polyclonal Antibody to PLC Gamma1 (Phospho-Tyr783)

Clonality :	Polyclonal
Application :	WB
Reactivity :	Human,Mouse,Rat
Gene :	PLCG1
Gene ID :	5335
Uniprot ID :	P19174
Format :	Purified
Alternative Name :	Phosphoinositide phospholipase C, Phospholipase C-gamma-1
Isotype :	Rabbit IgG
Immunogen Information :	Peptide sequence around phosphorylation site of tyrosine 783 (G-F-Y(p)-V-E) derived from Human PLCG1.

Description

PLC-gamma is a major substrate for heparin-binding growth factor 1 (acidic fibroblast growth factor)-activated tyrosine kinase. DeBell KE, et al. Mol Cell Biol. 1999 Nov; 19(11): 7388-7398. Ver

Product Info

Amount :	50 µl / 100 µl
Content :	Supplied at 1.0mg/mL in phosphate buffered saline (without Mg ²⁺ and Ca ²⁺), pH 7.4, 150mM NaCl, 0.02% sodium azide and 50% glycerol.
Storage condition :	Store the antibody at 4°C, stable for 6 months. For long-term storage, store at -20°C. Avoid repeated freeze and thaw cycles.

Application Note

Predicted MW: 155kd, Western blotting: 1:500~1:1000

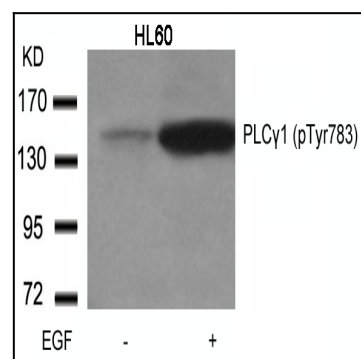


Figure 1: Western blot analysis of extracts from HL60 cells untreated or treated with EGF using PLCγ1(Phospho-Tyr783) Antibody 35-1100 .