

35-1091: Polyclonal Antibody to p53 (Phospho-Ser15)

Clonality :	Polyclonal
Application :	IHC,WB,IF
Reactivity :	Human
Gene :	TP53
Gene ID :	7157
Uniprot ID :	P04637
Format :	Purified
Alternative Name :	Tumor suppressor p53, Phosphoprotein p53, Antigen NY-CO-13, TP53
Isotype :	Rabbit IgG
Immunogen Information :	Peptide sequence around phosphorylation site of serine 15 (P-L-S(p)-Q-E) derived from Human p53.

Description

Acts as a tumor suppressor in many tumor types; induces growth arrest or apoptosis depending on the physiological circumstances and cell type. Involved in cell cycle regulation as a trans-activator that acts to negatively regulate cell division by controlling a set of genes required for this process. One of the activated genes is an inhibitor of cyclin-dependent kinases. Apoptosis induction seems to be mediated either by stimulation of BAX and FAS antigen expression, or by repression of Bcl-2 expression. Implicated in Notch signaling cross-over. Lin T, et al. (2005) Nat Cell Biol; 7(2): 165-71. Vega FM, et al. (2004) Mol Cell Biol; 24(23): 10366-80. Li J, et al. (2004) J Biol Chem; 279(40): 41275-9. Wang J, et al. (2004) J Biol Chem; 279(38): 39584-92.

Product Info

Amount :	50 µl / 100 µl
Content :	Supplied at 1.0mg/mL in phosphate buffered saline (without Mg ²⁺ and Ca ²⁺), pH 7.4, 150mM NaCl, 0.02% sodium azide and 50% glycerol.
Storage condition :	Store the antibody at 4°C, stable for 6 months. For long-term storage, store at -20°C. Avoid repeated freeze and thaw cycles.

Application Note

Predicted MW: 53kd, Western blotting: 1:500~1:1000, Immunohistochemistry: 1:50~1:100, Immunofluorescence: 1:100~1:200

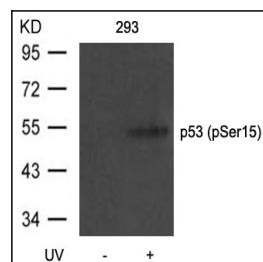


Figure 1: Western blot analysis of extracts from 293 cells untreated or treated with UV using p53(Phospho-Ser15) Antibody 35-1091 .

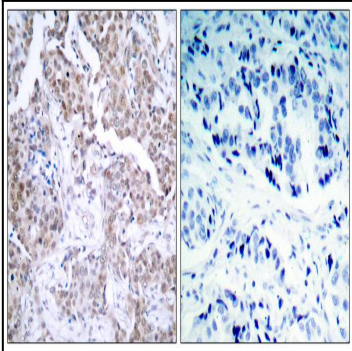


Figure 2: Immunohistochemical analysis of paraffin-embedded human breast carcinoma tissue using p53 (Phospho-Ser15) Antibody 35-1091 (left) or the same antibody preincubated with blocking peptide 51094 (right).

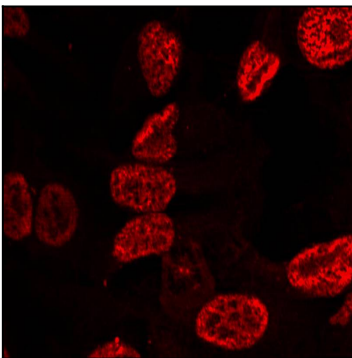


Figure 3: Immunofluorescence staining of methanol-fixed HeLa cells using p53(Phospho-Ser15) Antibody 35-1091 .

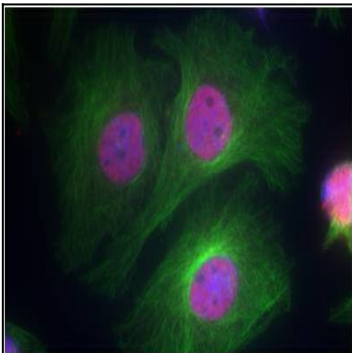


Figure 4: Immunofluorescence staining of methanol-fixed HeLa cells using p53 (Phospho-Ser15) Antibody 35-1091 .