

## 35-1090: Polyclonal Antibody to p53 (Phospho-Ser6)

<b>Clonality :</b>	Polyclonal
<b>Application :</b>	IHC,WB
<b>Reactivity :</b>	Human
<b>Gene :</b>	TP53
<b>Gene ID :</b>	7157
<b>Uniprot ID :</b>	P04637
<b>Format :</b>	Purified
<b>Alternative Name :</b>	Antigen NY-CO-13, Phosphoprotein p53, TP53, Tumor suppressor p53
<b>Isotype :</b>	Rabbit IgG
<b>Immunogen Information :</b>	Peptide sequence around phosphorylation site of serine 6 (P-Q-S(p)-D-P) derived from Human p53.

### Description

Acts as a tumor suppressor in many tumor types; induces growth arrest or apoptosis depending on the physiological circumstances and cell type. Involved in cell cycle regulation as a trans-activator that acts to negatively regulate cell division by controlling a set of genes required for this process. One of the activated genes is an inhibitor of cyclin-dependent kinases. Apoptosis induction seems to be mediated either by stimulation of BAX and FAS antigen expression, or by repression of Bcl-2 expression. Implicated in Notch signaling cross-over.

### Product Info

<b>Amount :</b>	50 µl / 100 µl
<b>Content :</b>	Supplied at 1.0mg/mL in phosphate buffered saline (without Mg <sup>2+</sup> and Ca <sup>2+</sup> ), pH 7.4, 150mM NaCl, 0.02% sodium azide and 50% glycerol.
<b>Storage condition :</b>	Store the antibody at 4°C, stable for 6 months. For long-term storage, store at -20°C. Avoid repeated freeze and thaw cycles.

### Application Note

Predicted MW: 53kd, Western blotting: 1:500~1:1000, Immunohistochemistry: 1:50~1:100

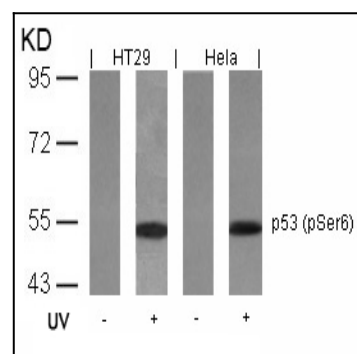


Figure 1: Western blot analysis of extracts from HT29 and HeLa cells untreated or treated with UV using p53(Phospho-Ser6) Antibody 35-1090 .

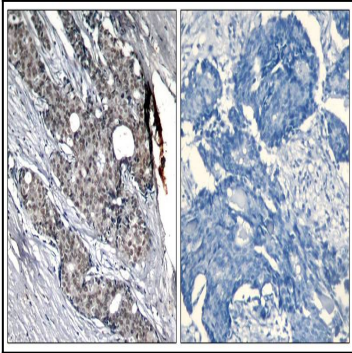


Figure 2: Immunohistochemical analysis of paraffin-embedded human breast carcinoma tissue using p53(Phospho-Ser6) Antibody 35-1090 (left) or the same antibody preincubated with blocking peptide(right).