

35-1088: Polyclonal Antibody to Caveolin-1 (Phospho-Tyr14)

Clonality :	Polyclonal
Application :	WB,IF
Reactivity :	Human,Mouse,Rat
Gene :	CAV1
Gene ID :	857
Uniprot ID :	Q03135
Format :	Purified
Alternative Name :	CAV, CAV1
Isotype :	Rabbit IgG
Immunogen Information :	Peptide sequence around phosphorylation site of tyrosine 14 (H-L-Y(p)-T-V) derived from Human CAVEOLIN-1.

Description

The scaffolding protein encoded by Caveolin-1 is the main component of the caveolae plasma membranes found in most cell types. The protein links integrin subunits to the tyrosine kinase FYN, an initiating step in coupling integrins to the Ras-ERK pathway and promoting cell cycle progression. The gene is a tumor suppressor gene candidate and a negative regulator of the Ras-p42/44 MAP kinase cascade. CAV1 and CAV2 are located next to each other on chromosome 7 and express colocalizing proteins that form a stable hetero-oligomeric complex. By using alternative initiation codons in the same reading frame, two isoforms (α and β) are encoded by a single transcript from this gene.

Product Info

Amount :	50 µl / 100 µl
Content :	Supplied at 1.0mg/mL in phosphate buffered saline (without Mg ²⁺ and Ca ²⁺), pH 7.4, 150mM NaCl, 0.02% sodium azide and 50% glycerol.
Storage condition :	Store the antibody at 4°C, stable for 6 months. For long-term storage, store at -20°C. Avoid repeated freeze and thaw cycles.

Application Note

Predicted MW: 24kd, Western blotting: 1:500~1:1000, Immunofluorescence: 1:100~1:200

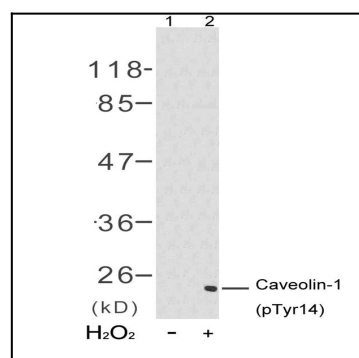


Figure 1: Western blot analysis of extracts from 3T3 cells untreated(lane 1) or treated with H₂O₂(lane 2) using Caveolin-1(Phospho-Tyr14) Antibody 35-1088 .

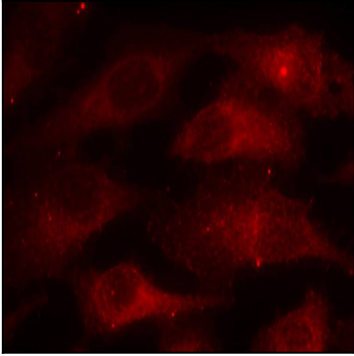


Figure 2: Immunofluorescence staining of methanol-fixed HeLa cells using Caveolin-1(Phospho-Tyr14) Antibody 35-1088 .