

## 35-1074: Polyclonal Antibody to HER2 (Phospho-Tyr1221/Tyr1222)

<b>Clonality :</b>	Polyclonal
<b>Application :</b>	WB,IF
<b>Reactivity :</b>	Human
<b>Gene :</b>	ERBB2
<b>Gene ID :</b>	2064
<b>Uniprot ID :</b>	P04626
<b>Format :</b>	Purified
<b>Alternative Name :</b>	C-erbB-2, ErbB2
<b>Isotype :</b>	Rabbit IgG
<b>Immunogen Information :</b>	Peptide sequence around phosphorylation site of tyrosine1221/1222 (N-L-Y(p)-Y(p)-W) derived from Human HER2.

### Description

Essential component of a neuregulin-receptor complex, although neuregulins do not interact with it alone. GP30 is a potential ligand for this receptor. Not activated by EGF, TGF- $\alpha$  and amphiregulin. Marone R, et al. (2004) Nat Cell Biol; 6(6): 515-22. Ren Z, et al. (2002) J Biol Chem; 277(41): 38486-93.

### Product Info

<b>Amount :</b>	50 $\mu$ l / 100 $\mu$ l
<b>Content :</b>	Supplied at 1.0mg/mL in phosphate buffered saline (without Mg <sup>2+</sup> and Ca <sup>2+</sup> ), pH 7.4, 150mM NaCl, 0.02% sodium azide and 50% glycerol.
<b>Storage condition :</b>	Store the antibody at 4°C, stable for 6 months. For long-term storage, store at -20°C. Avoid repeated freeze and thaw cycles.

### Application Note

Predicted MW: 185kd, Western blotting: 1:500~1:1000, Immunofluorescence: 1:100~1:200

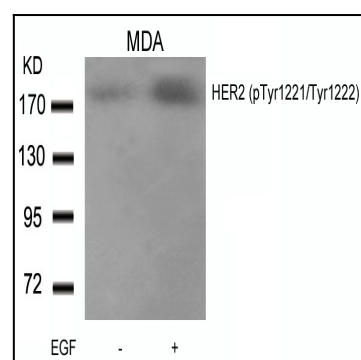


Figure 1: Western blot analysis of extracts from MDA cells untreated or treated with EGF using HER2(Phospho-Tyr1221/Tyr1222) Antibody 35-1074 .

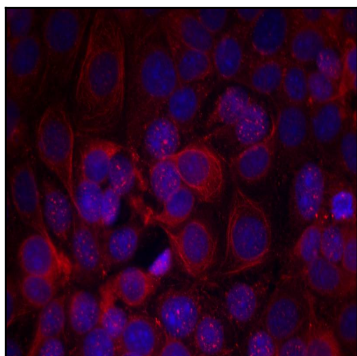


Figure 2: Immunofluorescence staining of methanol-fixed MCF cells using HER2(Phospho-Tyr1221/Tyr1222) Antibody 35-1074 .

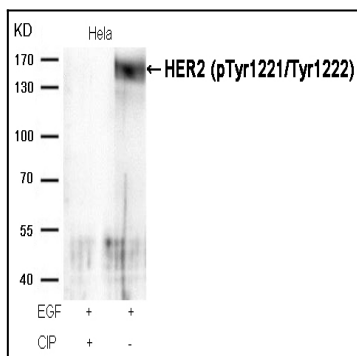


Figure 3: Western blot analysis of extracts from HeLa cells, treated with EGF or calf intestinal phosphatase (CIP), using HER2 (Phospho-Tyr1221/Tyr1222) Antibody 35-1074 .