

35-1073: Polyclonal Antibody to HER2 (Phospho-Tyr877)

Clonality :	Polyclonal
Application :	WB,IHC,IF
Reactivity :	Human,Mouse,Rat
Gene :	ERBB2
Gene ID :	2064
Uniprot ID :	P04626
Format :	Purified
Alternative Name :	C-erbB-2, ErbB2
Isotype :	Rabbit IgG
Immunogen Information :	Peptide sequence around phosphorylation site of tyrosine 877 (T-E-Y(p)-H-A) derived from Human HER2.

Description

Essential component of a neuregulin-receptor complex, although neuregulins do not interact with it alone. GP30 is a potential ligand for this receptor. Not activated by EGF, TGF- α and amphiregulin.

Product Info

Amount :	50 μ l / 100 μ l
Content :	Supplied at 1.0mg/mL in phosphate buffered saline (without Mg ²⁺ and Ca ²⁺), pH 7.4, 150mM NaCl, 0.02% sodium azide and 50% glycerol.
Storage condition :	Store the antibody at 4°C, stable for 6 months. For long-term storage, store at -20°C. Avoid repeated freeze and thaw cycles.

Application Note

Predicted MW: 185kd, Western blotting: 1:500~1:1000, Immunohistochemistry: 1:50~1:100, Immunofluorescence: 1:100~1:200

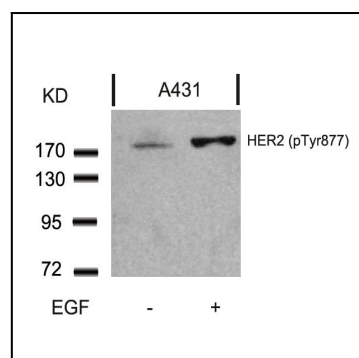


Figure 1: Western blot analysis of extracts from A431 cells untreated or treated with EGF using HER2(Phospho-Tyr877) Antibody 35-1073 .

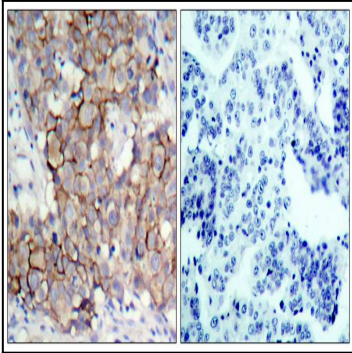


Figure 2: Immunohistochemical analysis of paraffin-embedded human breast carcinoma tissue, using HER2(Phospho-Tyr877) Antibody 35-1073 (left) or the same antibody preincubated with blocking peptide(right).

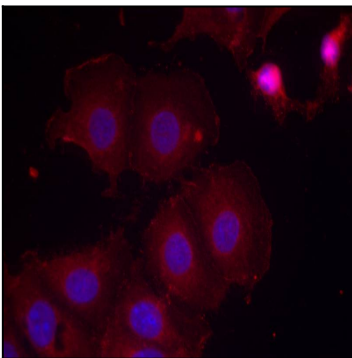


Figure 3: Immunofluorescence staining of methanol-fixed MCF7 cells using HER2(Phospho-Tyr877) Antibody 35-1073 .